



Moving Forward with LID in the Upper Thames River Watershed

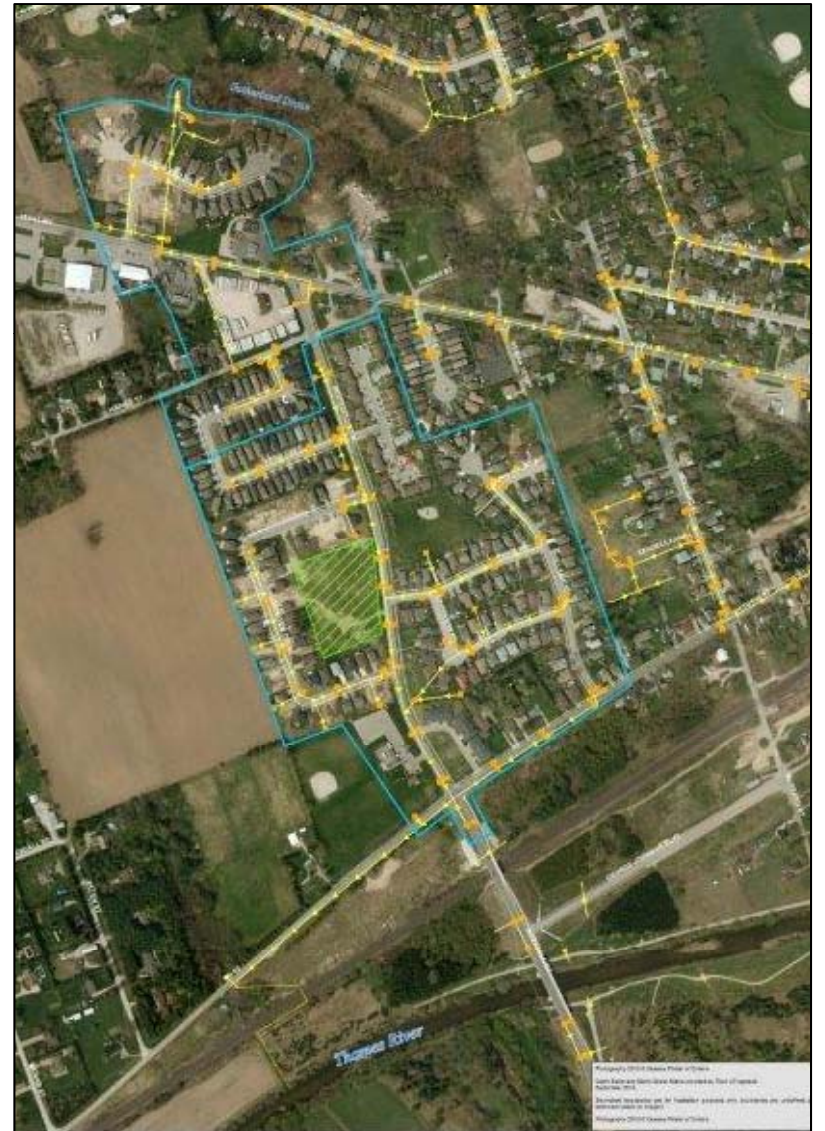
Alison Regehr

April 6, 2016

Approach

- Outreach and Education
- Demonstration Projects
- Supporting Municipal Partners
- Community of Practice

School Programming



Presentations and Workshops

- Community groups
- Contractors
- Developers



Future Demonstration Projects

- London
 - Glen Cairn
 - Residential
- Stratford-Perth
Museum and
Archives



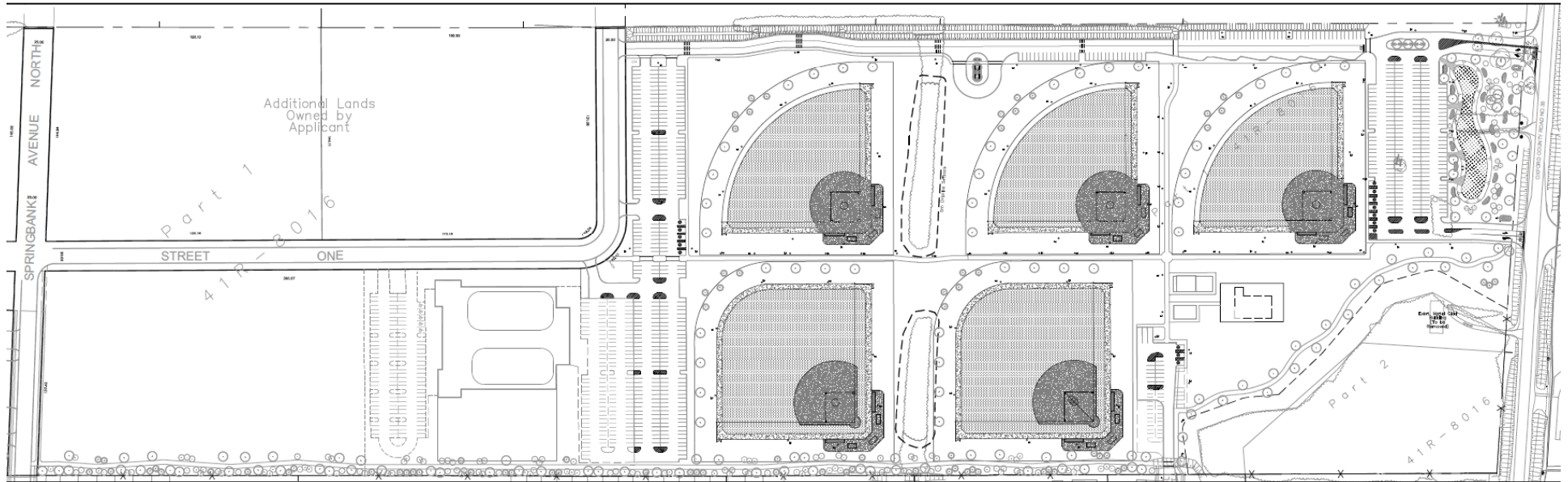
Future Demonstration Projects

- Fanshawe and Pittock Conservation Areas



Supporting Municipal Partners

- Woodall Park, Woodstock



Community of Practice

- Website
 - Resources – CVC, TRCA, reports, MOECC updates, municipality links
 - Maps of LID projects





<http://thamesriver.on.ca/low-impact-development/>

Alison Regehr

regehra@thamesriver.on.ca

519-451-2800 x295