



Naylor
Engineering
Associates LTD.
CONSULTING ENGINEERS

Borehole Number: 1

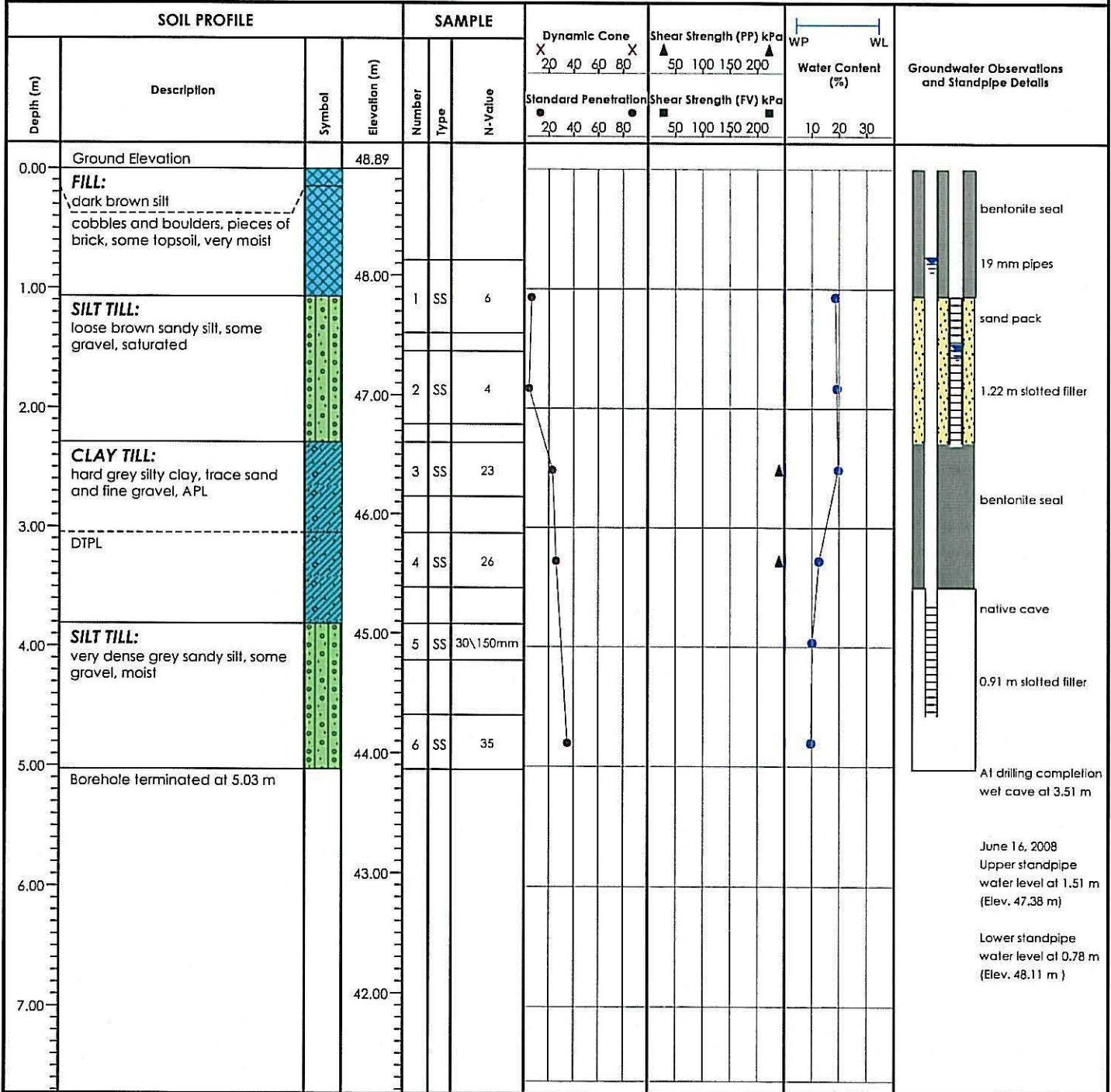
Ground Elevation: 48.89 m

Project: Embro Dam Embankment Stability Assessment

Job No.: 7607G1

Location: County Road 16, Township of Zorra, Ontario

Drill Date: June 9, 2008



Reviewed by: DK
Drill Method: Solid Stem Auger
Notes:

Field Tech.: RM
Sheet: 1 of 1
Drafted by: SM (01a)



Naylor
Engineering
Associates Ltd.
CONSULTING ENGINEERS

Borehole Number: 2

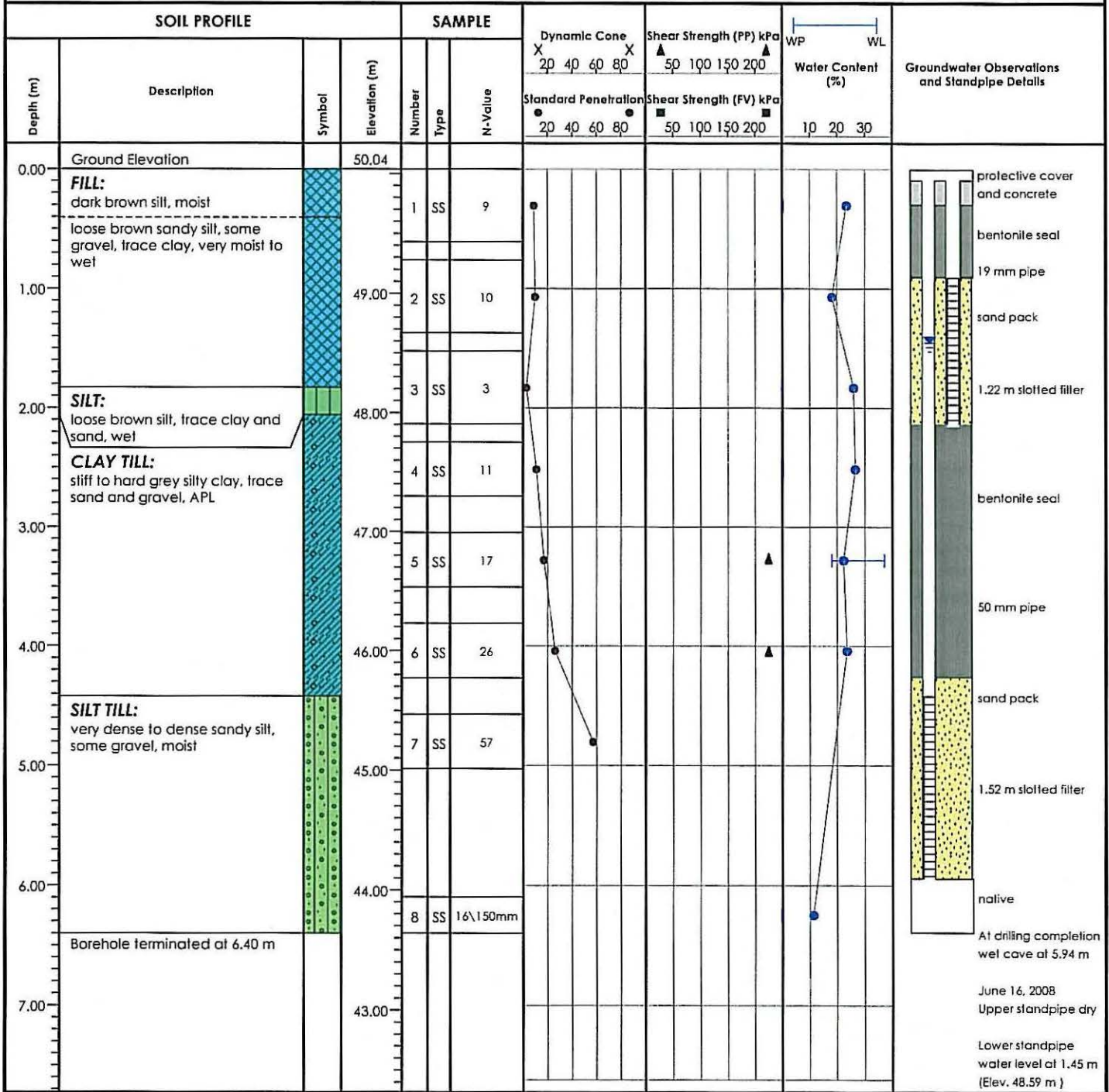
Ground Elevation: 50.04 m

Project: Embro Dam Embankment Stability Assessment

Job No.: 7607G1

Location: County Road 16, Township of Zorra, Ontario

Drill Date: June 9, 2008



Reviewed by: DK
Drill Method: Solid Stem Auger
Notes:

Field Tech.: RM
Sheet: 1 of 1
Drafted by: SM (01a)



Naylor
Engineering
Associates Ltd.
CONSULTING ENGINEERS

Borehole Number: 3

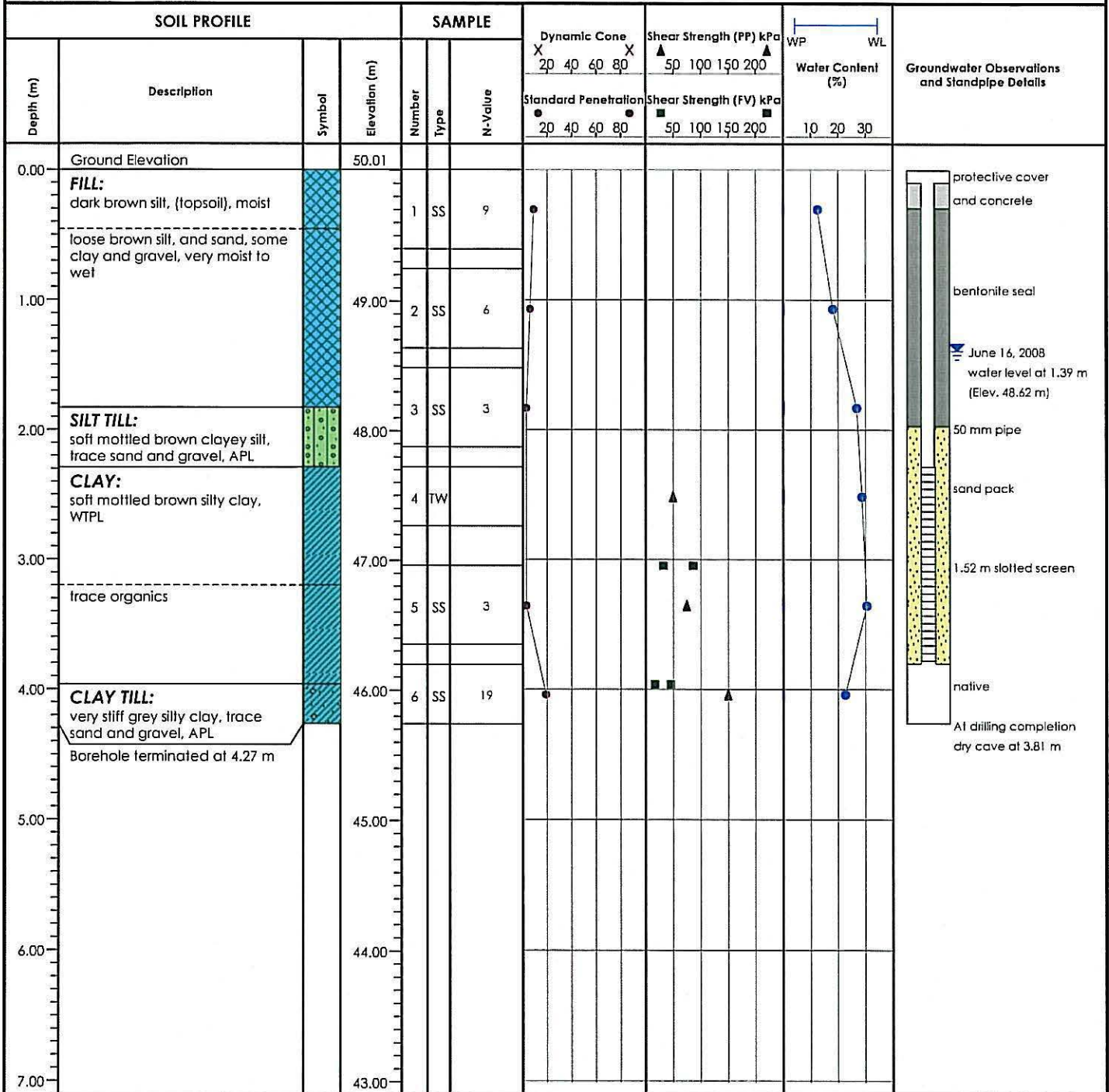
Ground Elevation: 50.01 m

Project: Embro Dam Embankment Stability Assessment

Job No.: 7607G1

Location: County Road 16, Township of Zorra, Ontario

Drill Date: June 9, 2008



Reviewed by: DK
Drill Method: Solid Stem Auger
Notes:

Field Tech.: RM
Sheet: 1 of 1
Drafted by: SM (01a)



Naylor
Engineering
Associates Ltd.
CONSULTING ENGINEERS

Borehole Number: 4

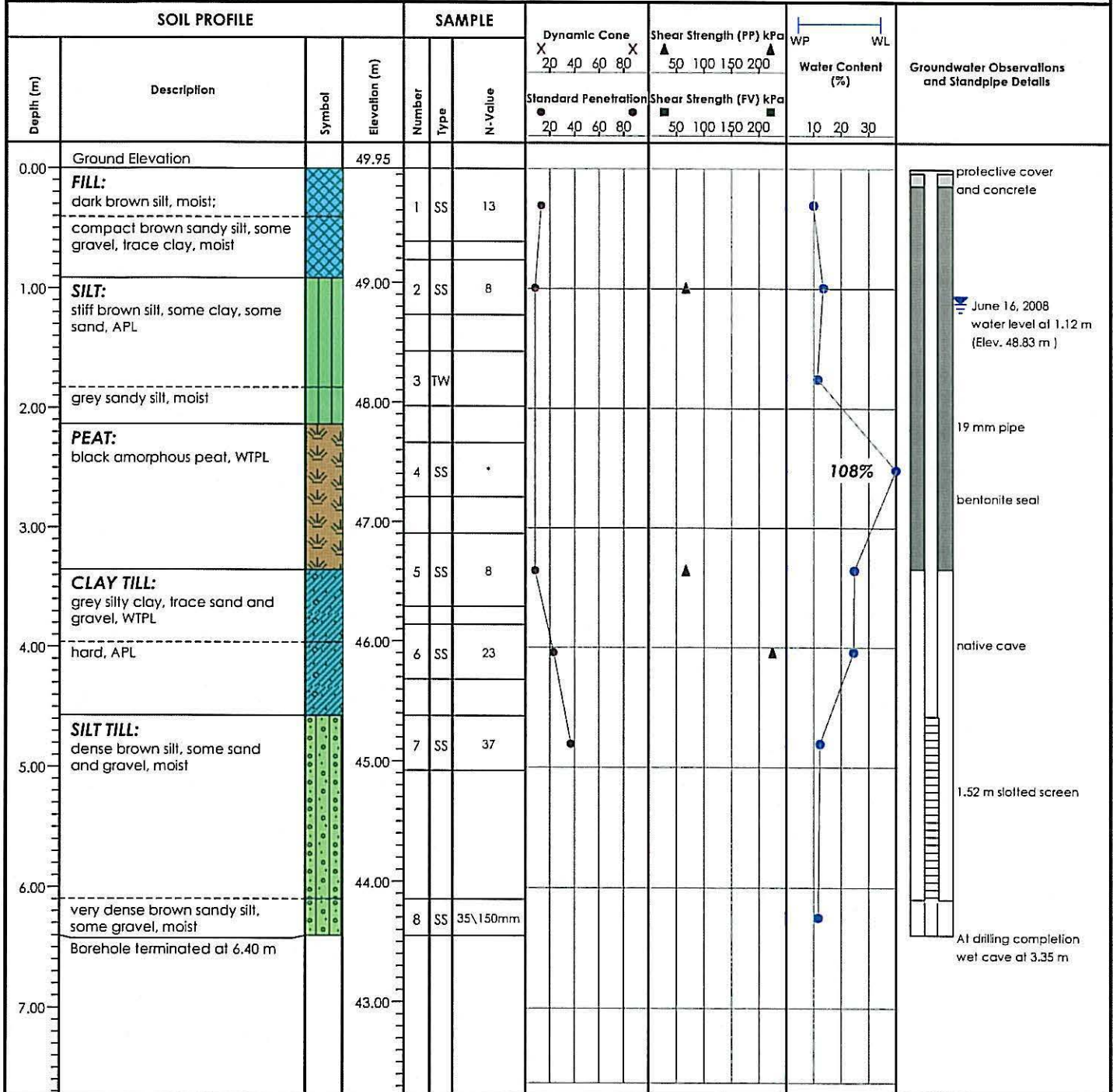
Ground Elevation: 49.95 m

Project: Embro Dam Embankment Stability Assessment

Job No.: 7607G1

Location: County Road 16, Township of Zorra, Ontario

Drill Date: June 10, 2008



Reviewed by: DK
Drill Method: Solid Stem Auger
Notes: *Sampler driving on wood

Field Tech.: RM
Sheet: 1 of 1
Drafted by: SM (01a)



Naylor
Engineering
Associates Ltd.
CONSULTING ENGINEERS

Borehole Number: 4A

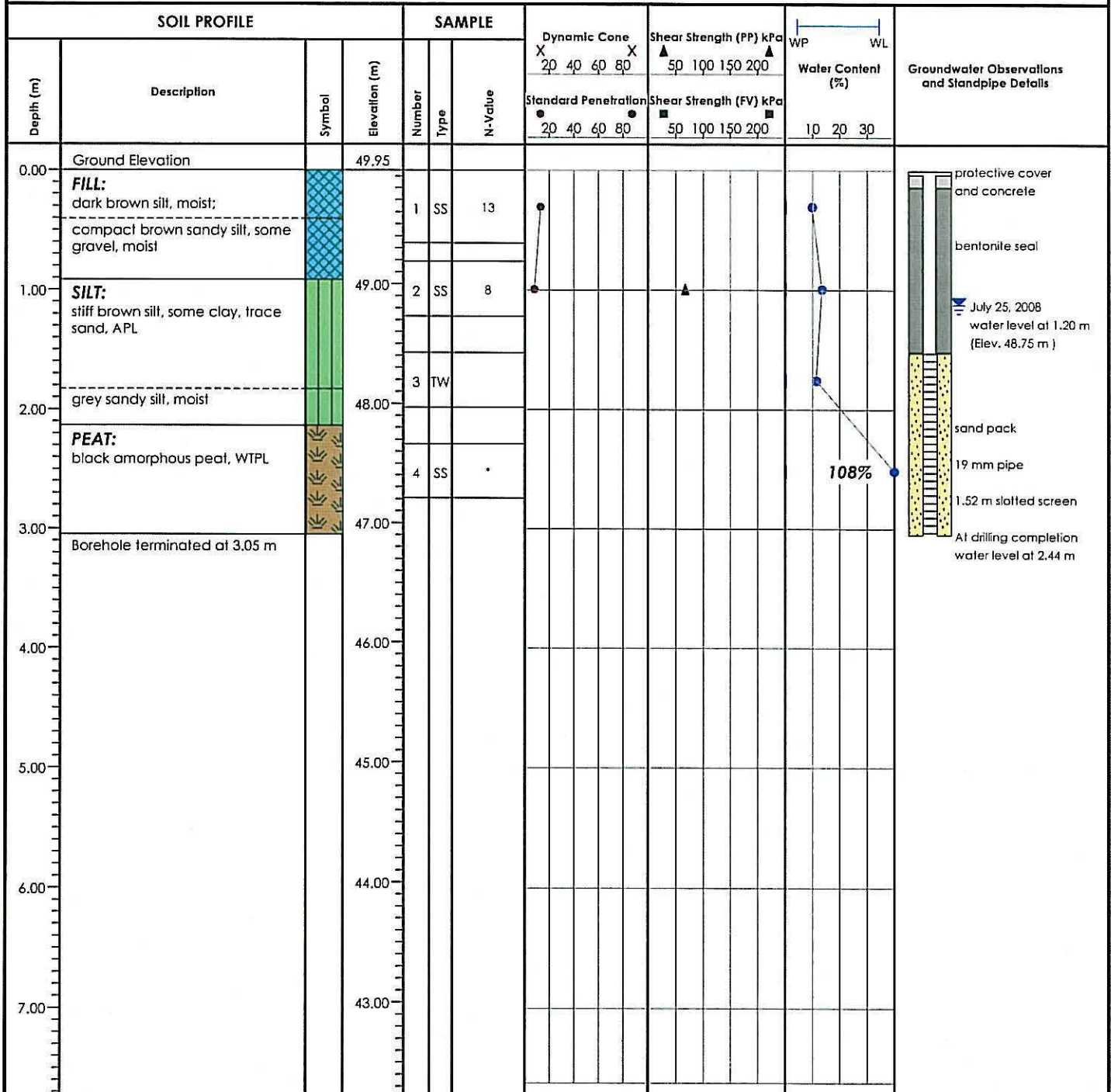
Ground Elevation: 49.95 m

Project: Embro Dam Embankment Stability Assessment

Job No.: 7607G1

Location: County Road 16, Township of Zorra, Ontario

Drill Date: June 10, 2008



Reviewed by: DK

Drill Method: Solid Stem Auger



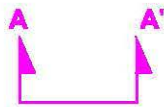
Notes: *Sampler driving on wood. Soil stratigraphy inferred from Borehole 4.

Field Tech.: RM

Sheet: 1 of 1

Drafted by: SM (01a)

No.	Revisions	Date
0	Report Issued	Sept. 2008
1		
2		
3		

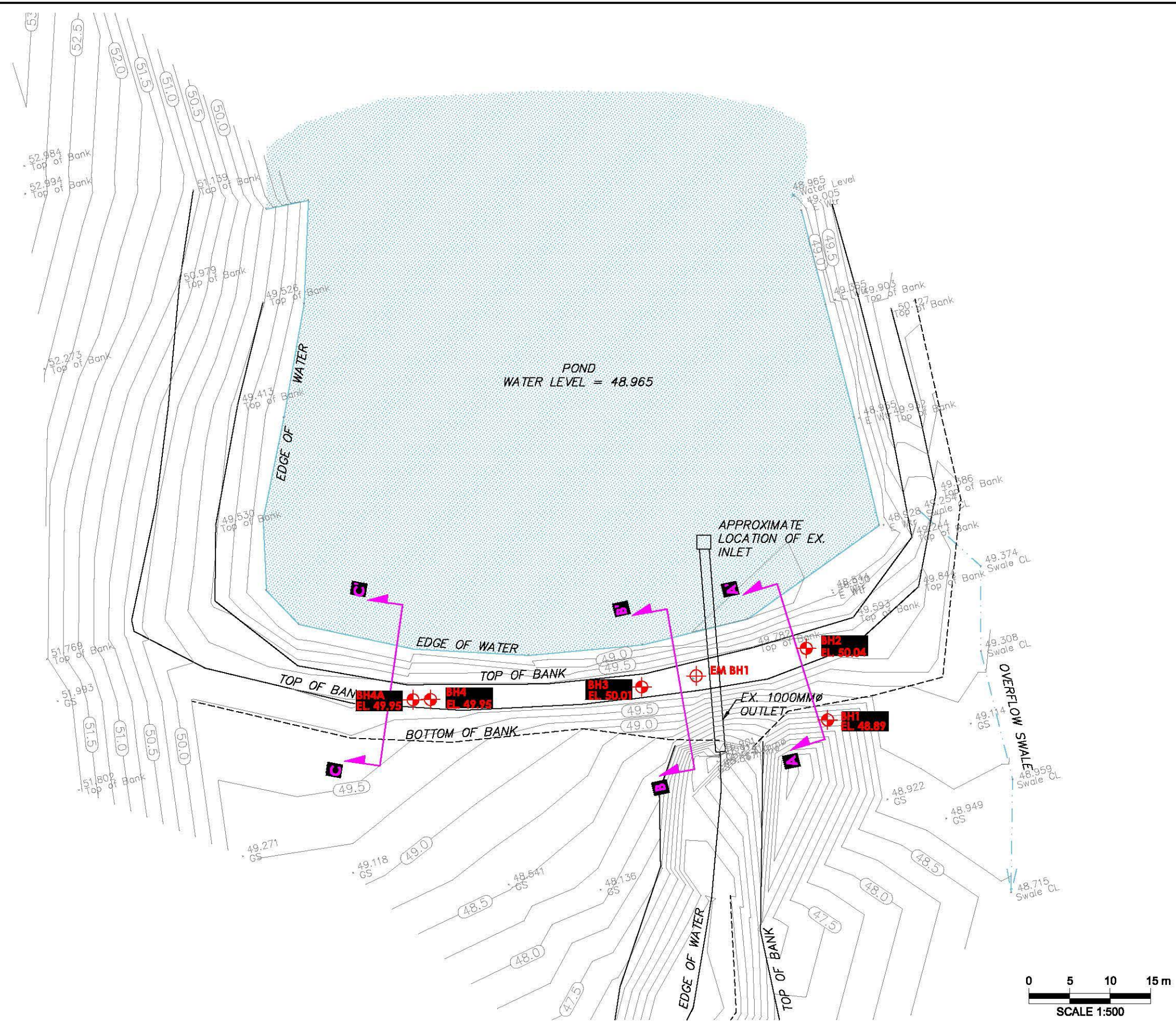
- Legend**
-  Borehole Location (Current Investigation)
 -  Approximate Borehole Location (Acres International)
 - EL.48.89** Ground Surface Elevation (m)
 -  Geologic Cross-Sections (See Drawing No. 3)
- Temporary Benchmark
Top centre of concrete base for post at southeast corner of pavillion
Elevation 53.045 m (assumed local datum)



Embro Dam Embankment Stability Assessment
County Road 16
Township of Zorra, Ontario

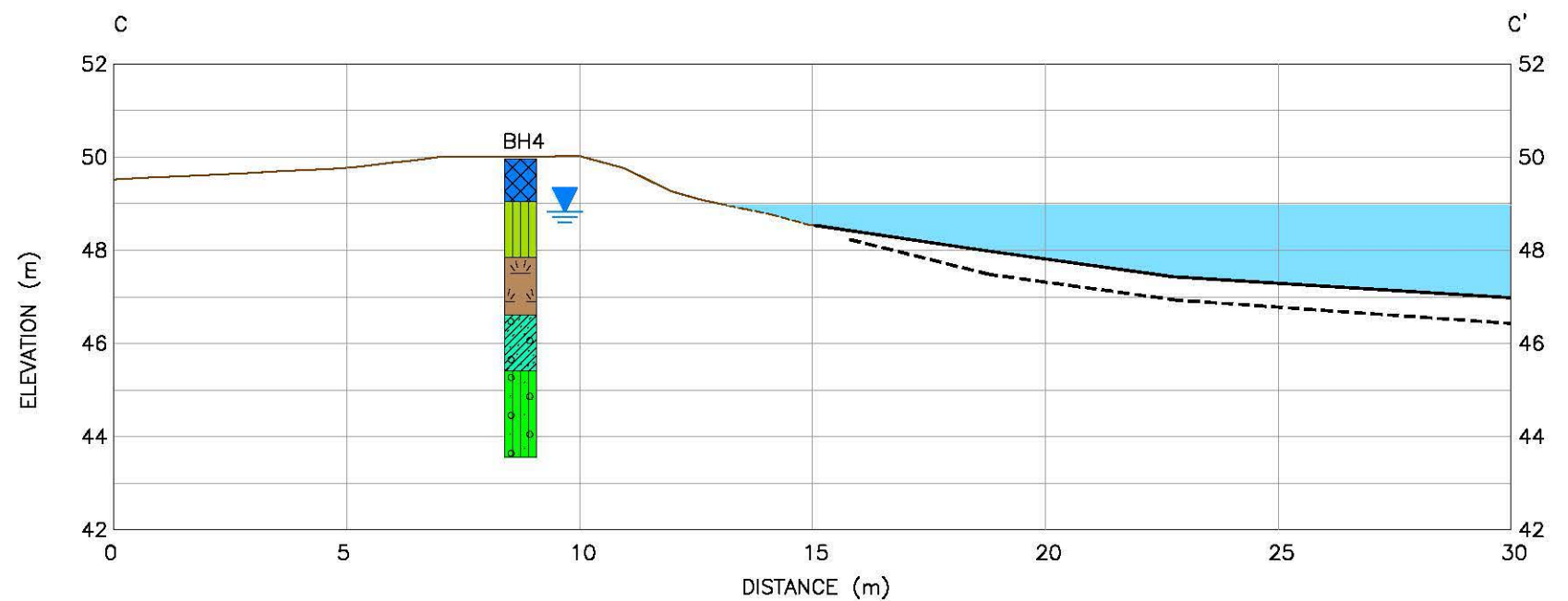
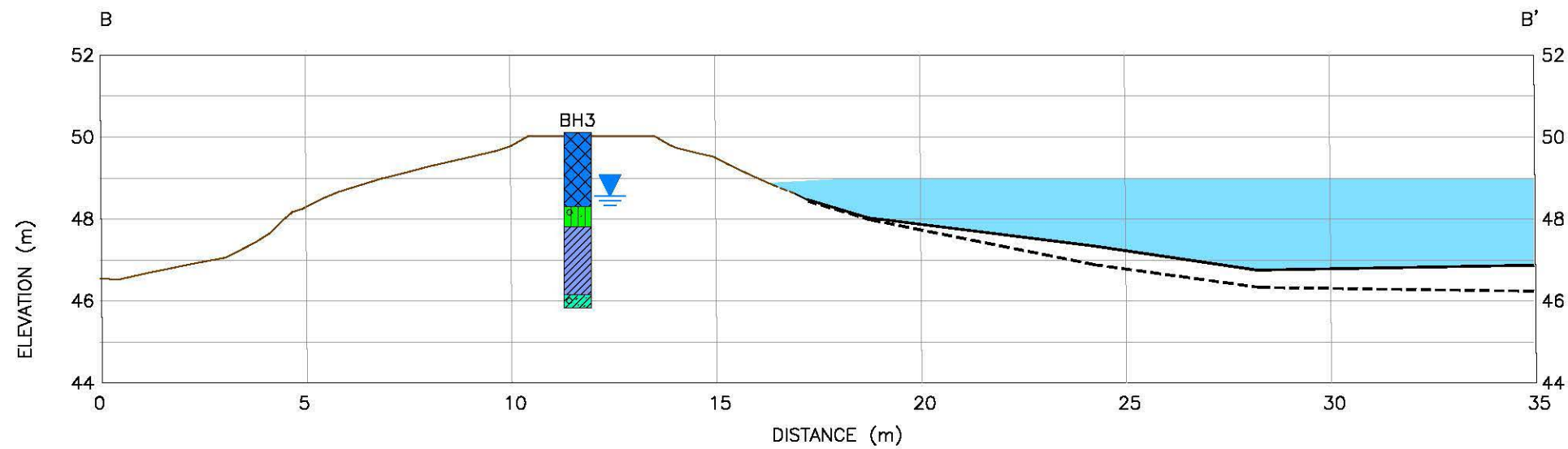
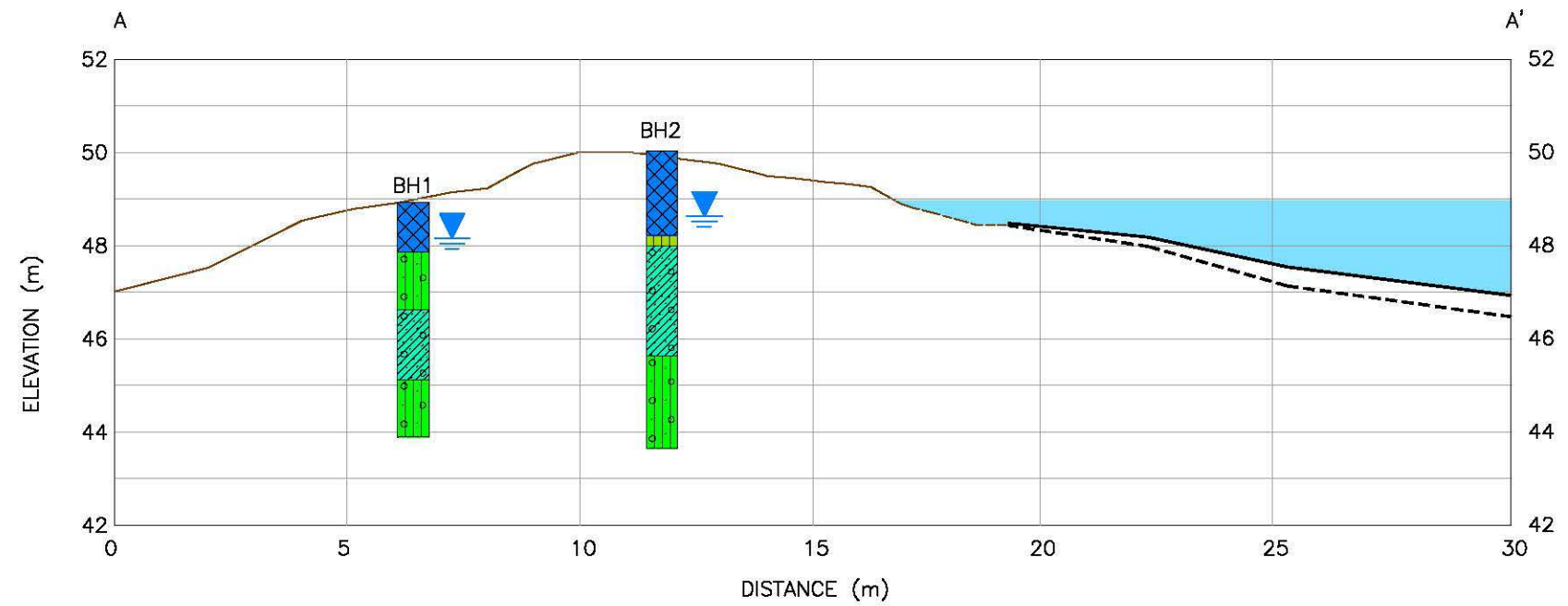
SITE PLAN

Date	Scale	Job No.	Drawing No.
Sept. 2008	1:500	7607G1	2



Drawing Reference: Base drawing provided by R. J. Burnside Associates Ltd.

F:\7607G1\7607G1\02.dwg August 5, 2008 1:14



No.	Revisions	Date
0	Report Issued	Sept. 2008
1		
2		
3		

Legend

- Fill
- Peat
- Silt
- Clay Till
- Silt Till
- Clay

- Groundwater Table
June 16, 2008

- Existing Grade
- Approximate Top of Sediment (m)
(Bottom of Pond)
- Approximate Bottom of Sediment (m)

Notes:

Seasonal fluctuations in groundwater levels would be expected.
 The inferred stratigraphy shown on this cross-section is based on the subsurface stratigraphy contacted at the boreholes. The subsurface conditions between the boreholes will vary.
 The ground surface under the water is based on depth (to refusal) measurements taken with a steel survey rod.



**Embro Dam Embankment Stability Assessment
 County Road 16
 Township of Zorra, Ontario**

CROSS-SECTIONS A - A', B - B' and C - C'

Date	Scale	Job No.	Drawing No.
Sept. 2008	1:150	7607G1	3