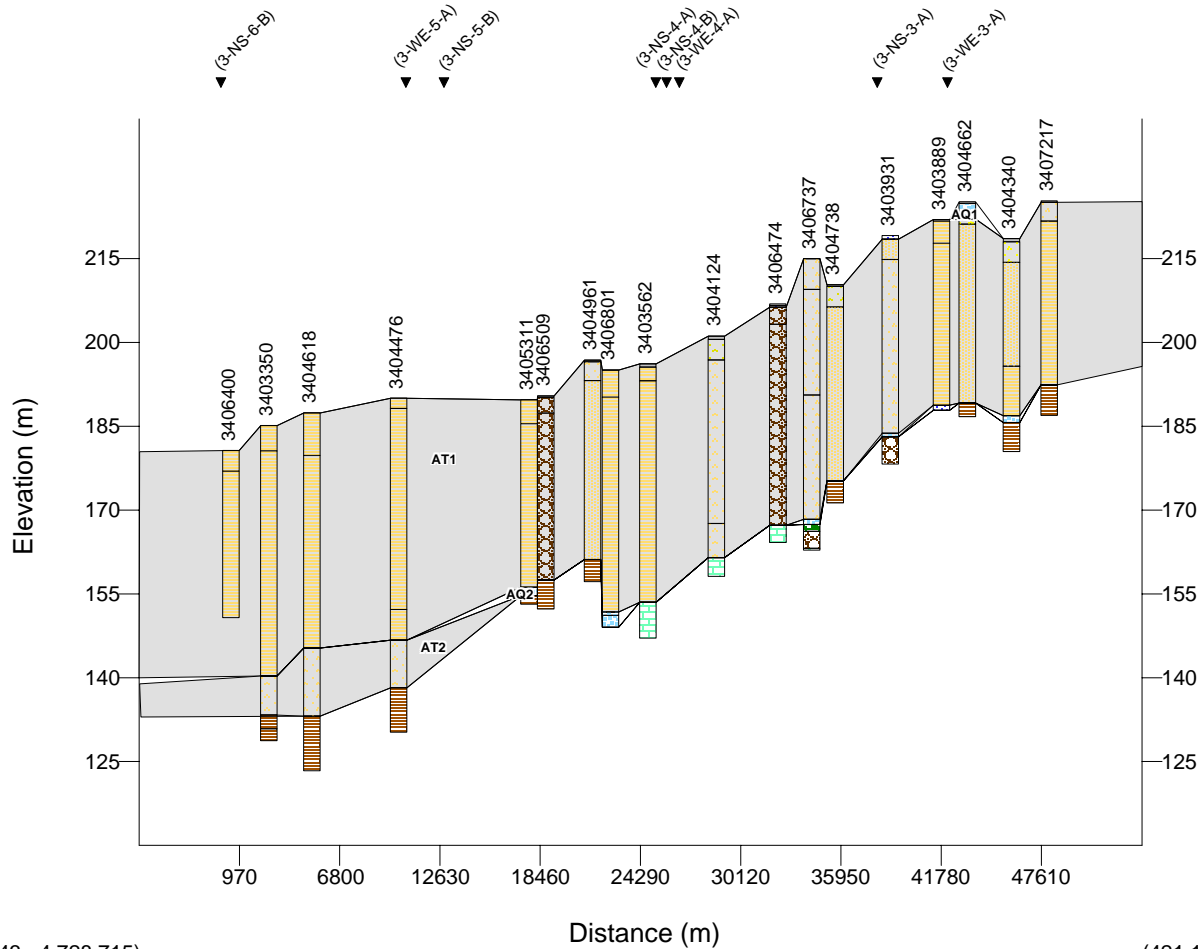


Regional Cross-section E-E'  
Vertical Exaggeration: 325



(376,343 ; 4,728,715)

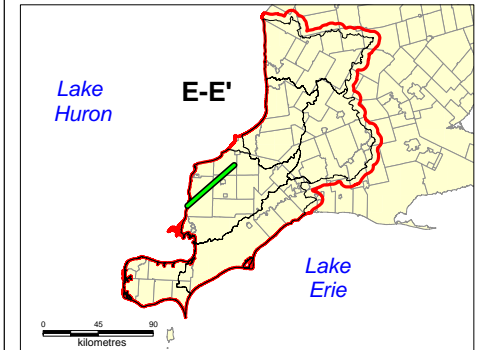
(421,139 ; 4,766,058)

AQ1 (HU I)      AT1 (HU IV)  
 AT1 (HU II)    AQ2 (HU V)  
 AQint (HU III)    AT2 (HU VI)

Six Conservation Authorities  
Geological and Hydrogeological  
Model Project

Legend

- Rock
- Limestone
- Shale
- Interbedded limestone/shale
- Diamicton: si/sa to sa matrix
- Diamicton: si/sa to sa, stoney
- Diamicton: si to sa/si matrix
- Diamicton: si to sa/si, stoney
- Diamicton: texture unknown
- Diamicton: cl to cl/si matrix
- Gravel, gravelly sand
- Sand, silty sand
- Silt, sandy silt, clayey silt
- Clay, silty clay
- Organic
- Fill (incl topsoil, waste)
- No obvious material code
- Cross-Section Location
- Study Area
- Conservation Authorities



Disclaimer: This map is intended for illustrative purposes only. This figure is to be read in conjunction with the Six Conservation Authorities Feflow Model Report.

Digital Mapping Sources:  
 Base Mapping features - Ministry of the Environment.  
 Date: November, 2006



Figure1-9: Regional Cross-section E-E'