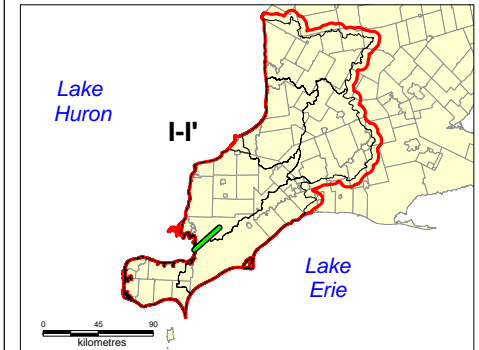
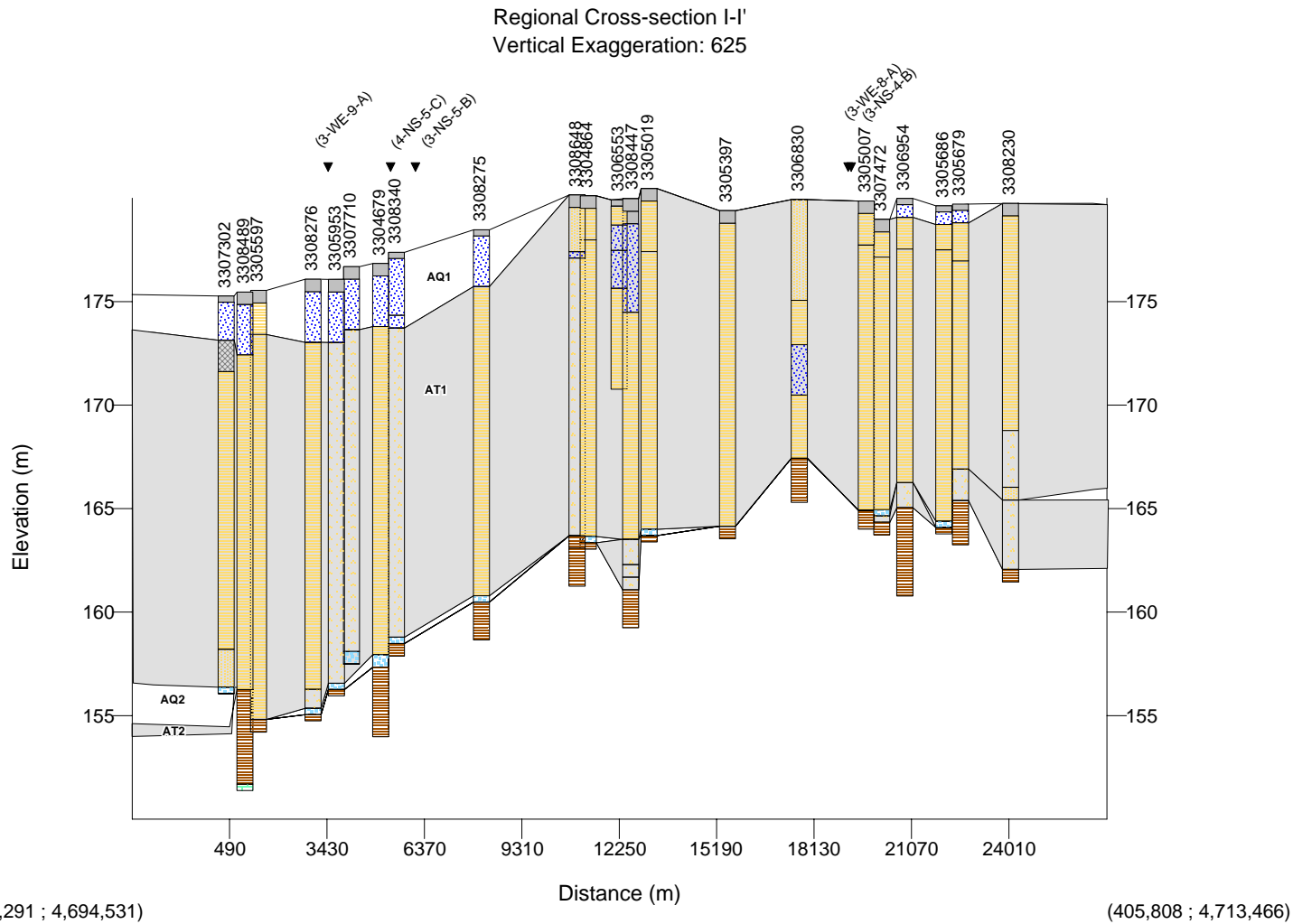


Six Conservation Authorities Geological and Hydrogeological Model Project

Legend

- Rock
- Limestone
- Shale
- Interbedded limestone/shale
- Diamictic: si/sa to sa matrix
- Diamictic: si/sa to sa, stoney
- Diamictic: si to sa/si matrix
- Diamictic: si to sa/si, stoney
- Diamictic: texture unknown
- Diamictic: cl to cl/si matrix
- Gravel, gravelly sand
- Sand, silty sand
- Silt, sandy silt, clayey silt
- Clay, silty clay
- Organic
- Fill (incl topsoil, waste)
- No obvious material code
- Cross-Section Location
- Study Area
- Conservation Authorities



Disclaimer: This map is intended for illustrative purposes only. This figure is to be read in conjunction with the Six Conservation Authorities Feflow Model Report.

Digital Mapping Sources:
Base Mapping features - Ministry of the Environment.
Date: November, 2006



AQ1 (HU I) AT1 (HU IV)
AT1 (HU II) AQ2 (HU V)
AQint (HU III) AT2 (HU VI)

Figure 1-13: Regional Cross-section I-I'