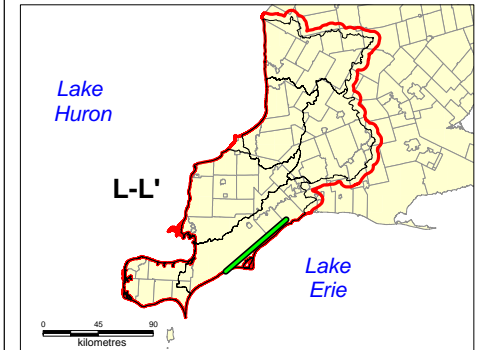


## Six Conservation Authorities Geological and Hydrogeological Model Project

### Legend

- Rock
- Limestone
- Shale
- Interbedded limestone/shale
- Diamictic: si/sa to sa matrix
- Diamictic: si/sa to sa, stoney
- Diamictic: si to sa/si matrix
- Diamictic: si to sa/si, stoney
- Diamictic: texture unknown
- Diamictic: cl to cl/si matrix
- Gravel, gravelly sand
- Sand, silty sand
- Silt, sandy silt, clayey silt
- Clay, silty clay
- Organic
- Fill (incl topsoil, waste)
- No obvious material code
- Cross-Section Location
- Study Area
- Conservation Authorities



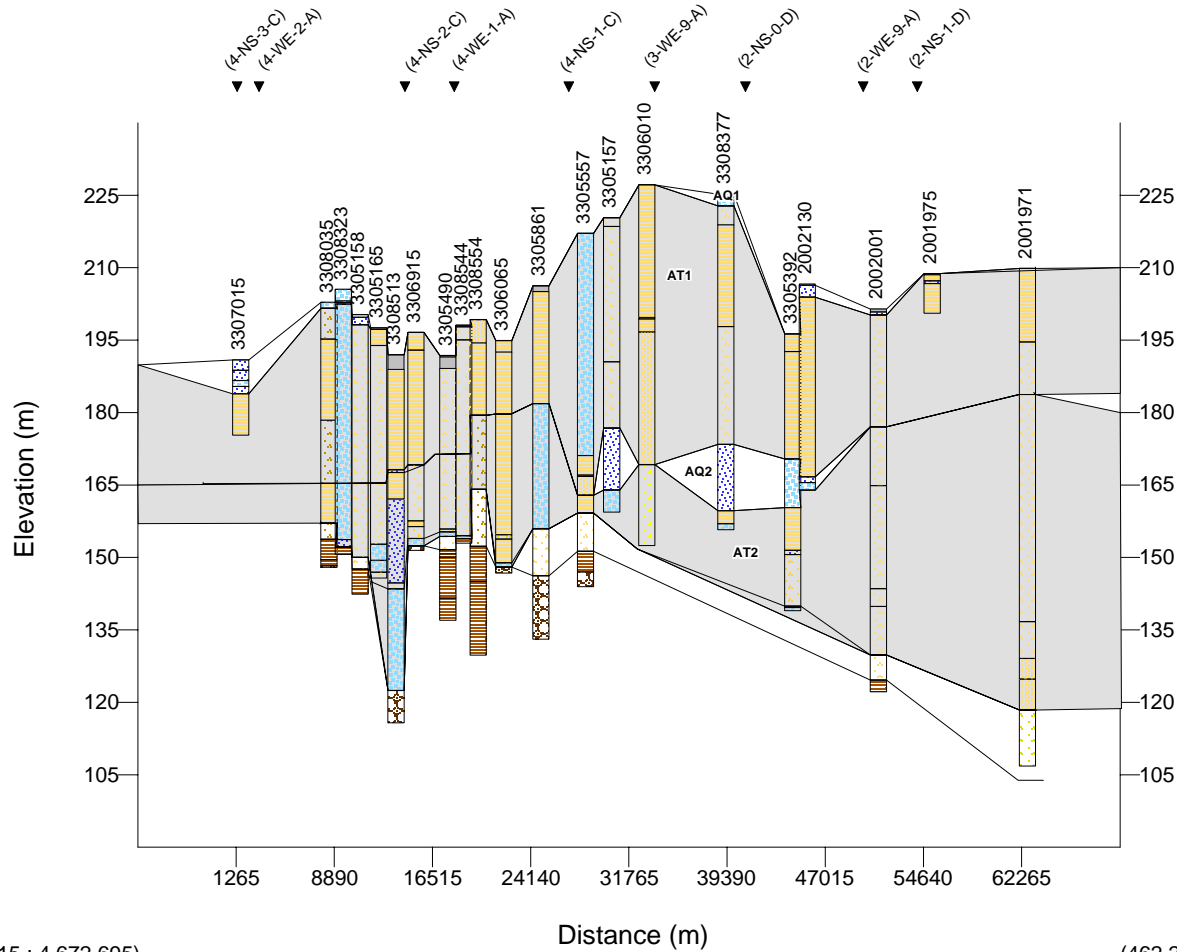
Disclaimer: This map is intended for illustrative purposes only. This figure is to be read in conjunction with the Six Conservation Authorities Feflow Model Report.

Digital Mapping Sources:  
Base Mapping features - Ministry of the Environment.  
Date: November, 2006



Figure 1-16: Regional Cross-section L-L'

### Regional Cross-section L-L' Vertical Exaggeration: 375



(403,615 ; 4,672,695)

(462,281 ; 4,721,433)

AQ1 (HU I)	AT1 (HU IV)
AT1 (HU II)	AQ2 (HU V)
AQint (HU III)	AT2 (HU VI)