
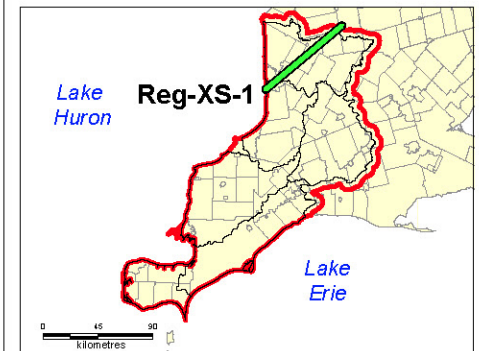


Six Conservation Authorities Three Dimensional Groundwater Flow Model

Legend

-  Rock
-  Limestone
-  Shale
-  Interbedded limestone/shale
-  Diamictic: si/sa to sa matrix
-  Diamictic: si/sa to sa, stoney
-  Diamictic: si to sa/si matrix
-  Diamictic: si to sa/si, stoney
-  Diamictic: texture unknown
-  Diamictic: cl to cl/si matrix
-  Gravel, gravelly sand
-  Sand, silty sand
-  Silt, sandy silt, clayey silt
-  Clay, silty clay
-  Organic
-  Fill (incl topsoil, waste)
-  No obvious material code
-  Cross-Section Location
-  Study Area
-  Conservation Authorities



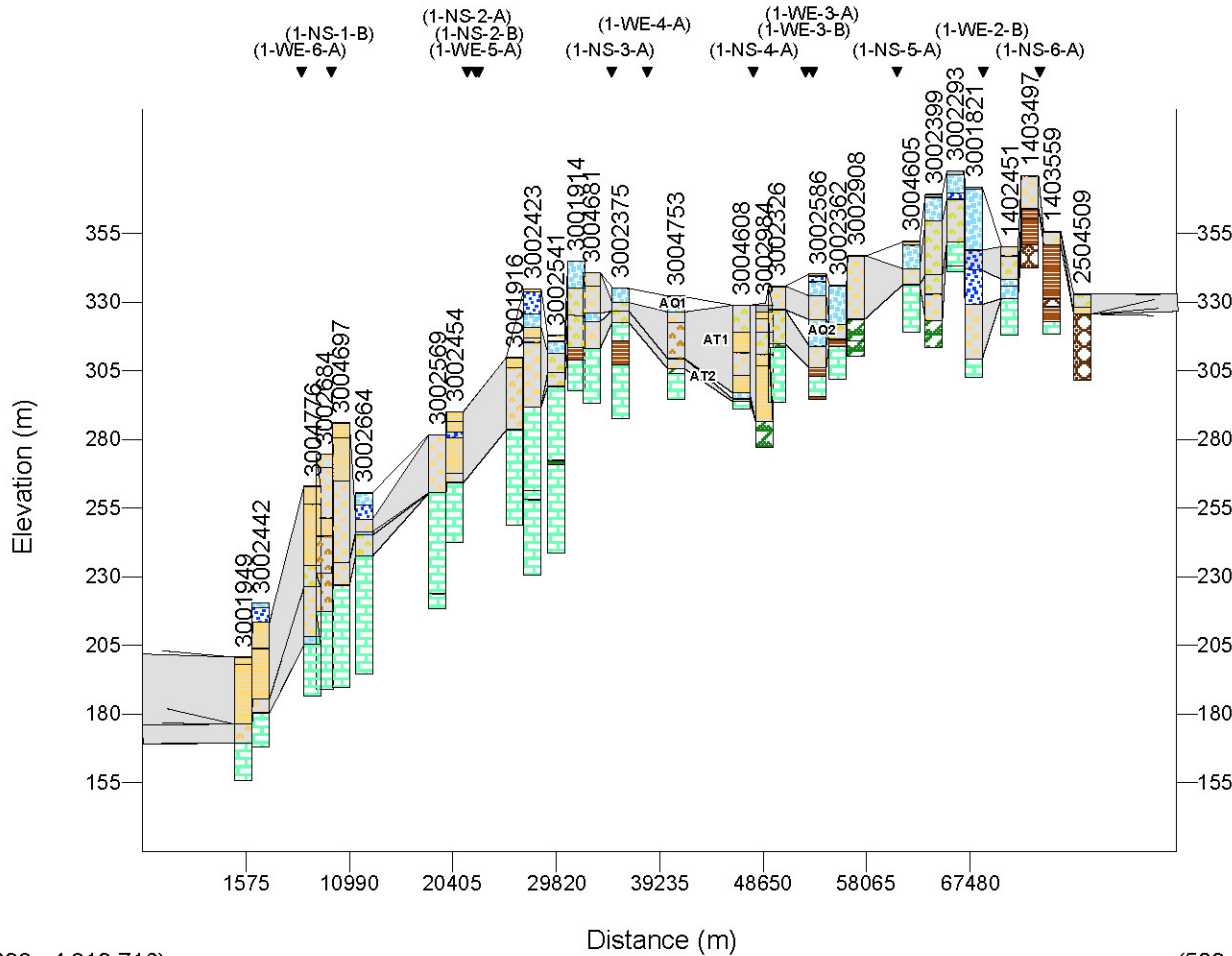
Disclaimer: This map is intended for illustrative purposes only. This figure is to be read in conjunction with the Six Conservation Authorities Feflow Model Report.

Digital Mapping Sources:
Base Mapping features - Ministry of the Environment.
Date: September, 2004



Figure 10: Cross-Section Reg-XS-1

Section Reg_XS_1 Vertical Exaggeration: 250



(437,038 ; 4,819,716)

(509,253 ; 4,880,093)