



SNAP the LID in Glen Cairn

Upper Thames River Conservation Authority

The Upper Thames River Conservation Authority has adopted the SNAP or the Sustainable Neighbourhood Retrofit Action Plan approach to bring together residents, businesses, community groups and government agencies to develop an action plan for change in the Glen Cairn neighbourhood in London. The SNAP program aims to accelerate the implementation of environmental improvements by taking an integrated approach to address a broad range of objectives with locally tailored solutions.

Education, promotion and demonstration projects are needed to help citizens of all ages understand stormwater and how their actions can greatly improve water quality and our ability to safely respond to extreme precipitation events. By highlighting LID within the Glen Cairn SNAP, the Authority hopes the project also becomes a valuable demonstration area and learning experience regarding stormwater management.

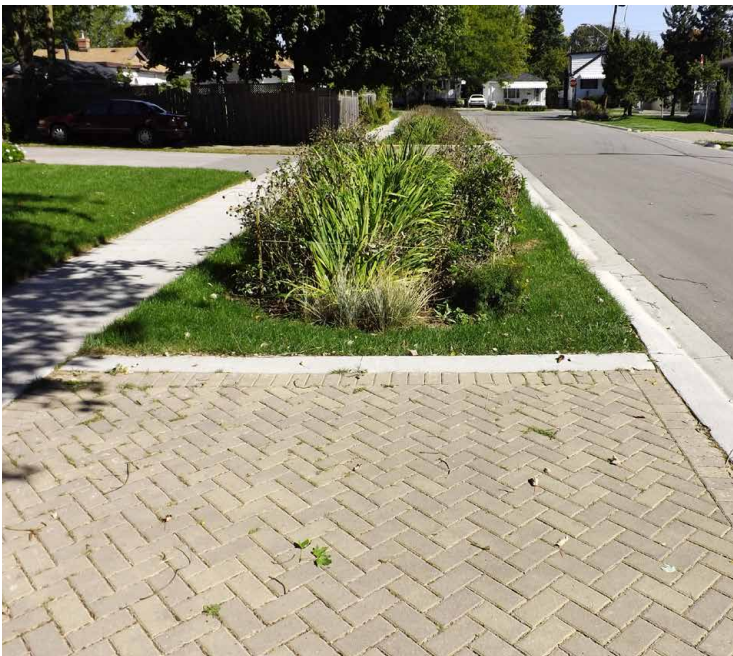


The Glen Cairn neighbourhood is in the Forks subwatershed, which the Conservation Authority prioritized for restoration work following recent updates to its Watershed Report Cards. The neighbourhood is home to many new Canadians, which is a target group of the Authority. Work to involve the Glen Cairn community in improving the health of their local environment was initiated in 2013 with their preference - a plan to restore and improve Glen Cairn Park North. The Glen Cairn SNAP will fulfill the goals of many partners and will involve leveraging the resources of other groups, with similar goals, to support implementation in Glen Cairn.



The UTRCA is interested in increasing the implementation of Low Impact Development (LID) in the watershed. LID is a stormwater management technique that uses simple designs and landscape features at the lot level to infiltrate, filter and retain runoff close to its source. Examples include rain gardens, permeable pavement and bioswales.

The goal of LID is to reduce the rate and amount of water running off of a property by slowing it down and containing it on the property close to where it falls. Less water goes into watercourses from storm sewers, helping to minimize flooding and streambank erosion. Stormwater can also affect water quality. When water flows across impermeable surfaces like streets and parking lots, it picks up pollutants and carries them into the storm drain system. This water moves directly into the Thames River and eventually, to Lakes St. Clair and Erie.





Private businesses, agencies and homeowners in the Glen Cairn neighbourhood have created the Glen Cairn Community Partners collaborative.

Glen Cairn Community Partners Collaborative members:

City of London:

- Neighbourhood, Children & Fire Services
- Planning – Environment and Parks Planning

Community Living London

Forest City Fire Protection and Security

Glen Cairn Community Resource Centre

London Training Centre

Lovers atWork Office Furniture

Upper Thames River Conservation Authority

YFC London (previously Youth for Christ)



With funding support from the London Community Foundation, Environment Canada, the Ontario Ministry of the Environment and Climate Change and the City of London, the Collaborative has planned the following SNAP the LID activities in 2015 :

- Hosting a LID workshop for the construction/ landscaper/ development and contractor industry – March 31st
- Implementation of the Stream of Dreams program to link area students. In school program: April 7th to the 10th ; Installation April 21st and 22nd
- Installation and interpretation of LID projects
- Pilot implementation of a stormwater education program for students that involves both in class and outdoor components
- Integration of the City of London's Growing Naturally program with the Authority's Healthy yards workshops to better enable homeowners to implement green infrastructure projects on their own properties
- Continued renewal of Glen Cairn Park North and other parklands to better suit local recreation needs and integrate environmental education features and community gathering spaces
- Hosting community events designed to build community involvement and attract and involve new Canadians
- Host 2 DePave Paradise projects (neighborhood workbees) to break up and remove an area of unused pavement and turn it into living green space
- Development of a monitoring framework to scope the components of and implementation plan for specific LID project performance and overall impact on the health of the Forks subwatershed
- SNAP the LID project promotion through media events, website support and presentations
- Other projects identified by the Glen Cairn community and project partners

For more information contact:
Julie Welker
Community Partnership Specialist
welkerj@thamesriver.on.ca

Teresa Hollingsworth
Coordinator
Community and Corporate Services
hollingswortht@thamesriver.on.ca

