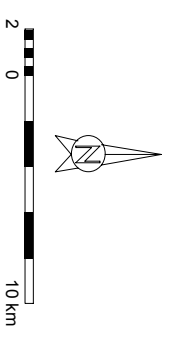
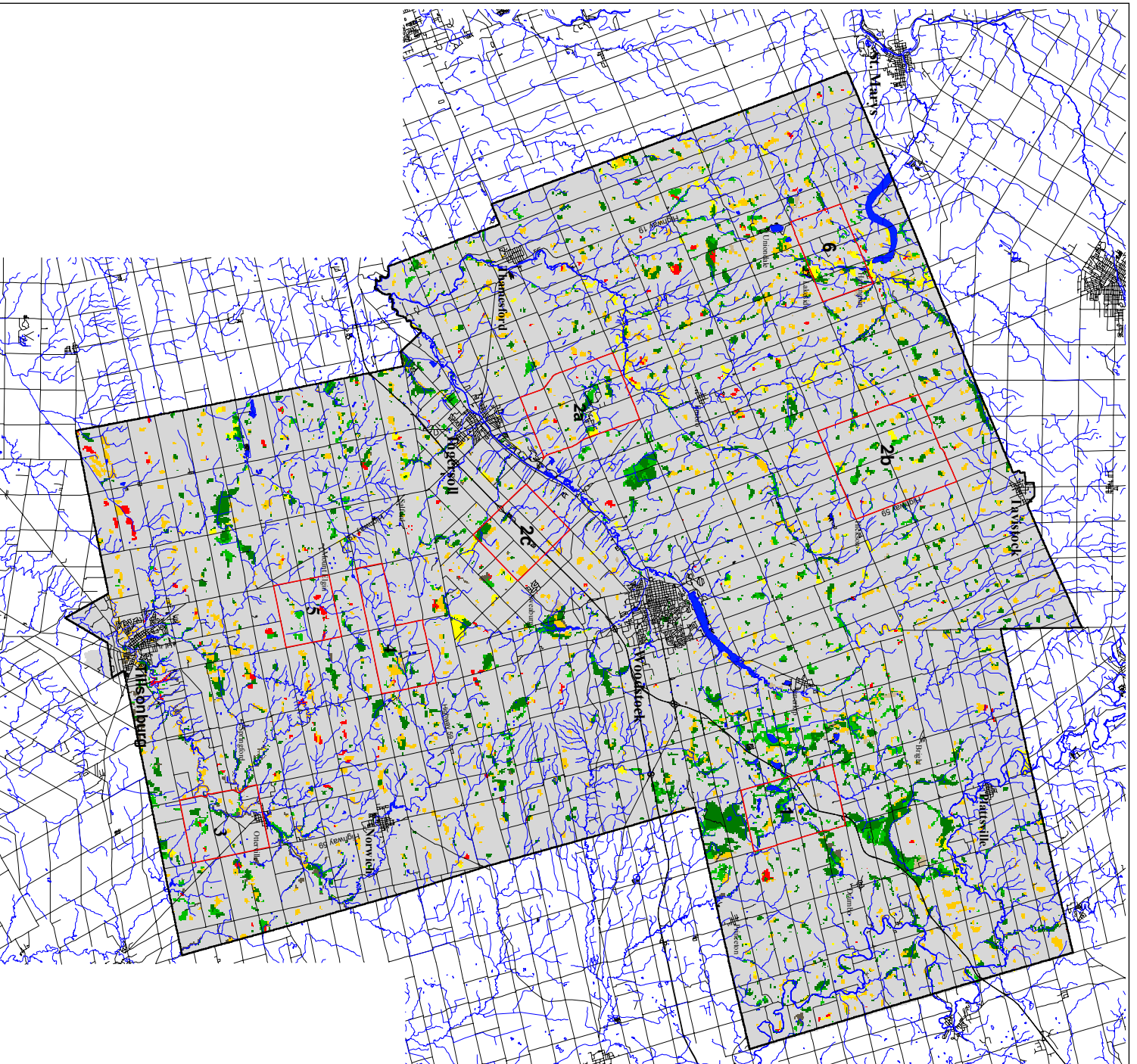


Map 3

OXFORD COUNTY TERRESTRIAL ECOSYSTEMS STUDY

Historical Forest Classification for Soil Moisture and Stage of Succession



Legend

- Mesic Young
- Mesic Sub-Climax
- Mesic Climax
- Wet/Mesic Young
- Wet/Mesic Sub-Climax to Climax
- Transitional
- Plantation
- Trial Landscape Boundaries
- County Boundary

Base Mapping: Ref. base mapping is based on information taken from the National Topographic System map sheets 4901, 2, 3, 6, 7, 8, 4014, 15, 6, 1986. For Majesty the Queen in Right of Canada with permission of Natural Resources, Canada.

Forest Classification for Soil Moisture and Stage Succession based on Conservation Authority Reports and Ministry of Natural Resources - FRI maps. Mapping is divided by watershed and inventories were completed in years as follows: Thames River 1952, Grand River 1954, Big Creek 1955, Otter Creek 1957, Nith River 1951, Cullin Creek (FRI) 1978.