

1:25000

OXFORD COUNTY TERRESTRIAL
ECOSYSTEM STUDY

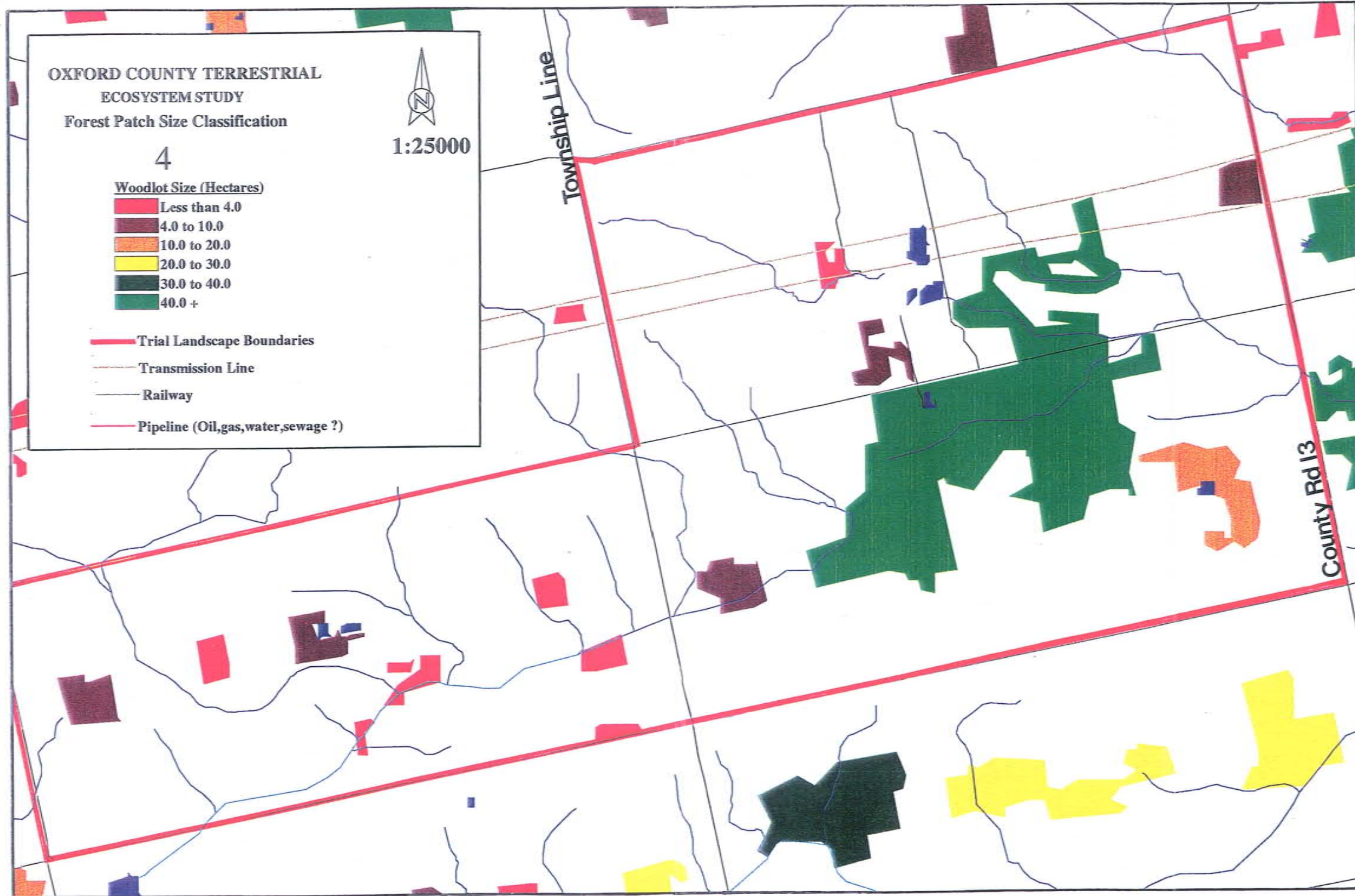
Forest Patch Size Classification

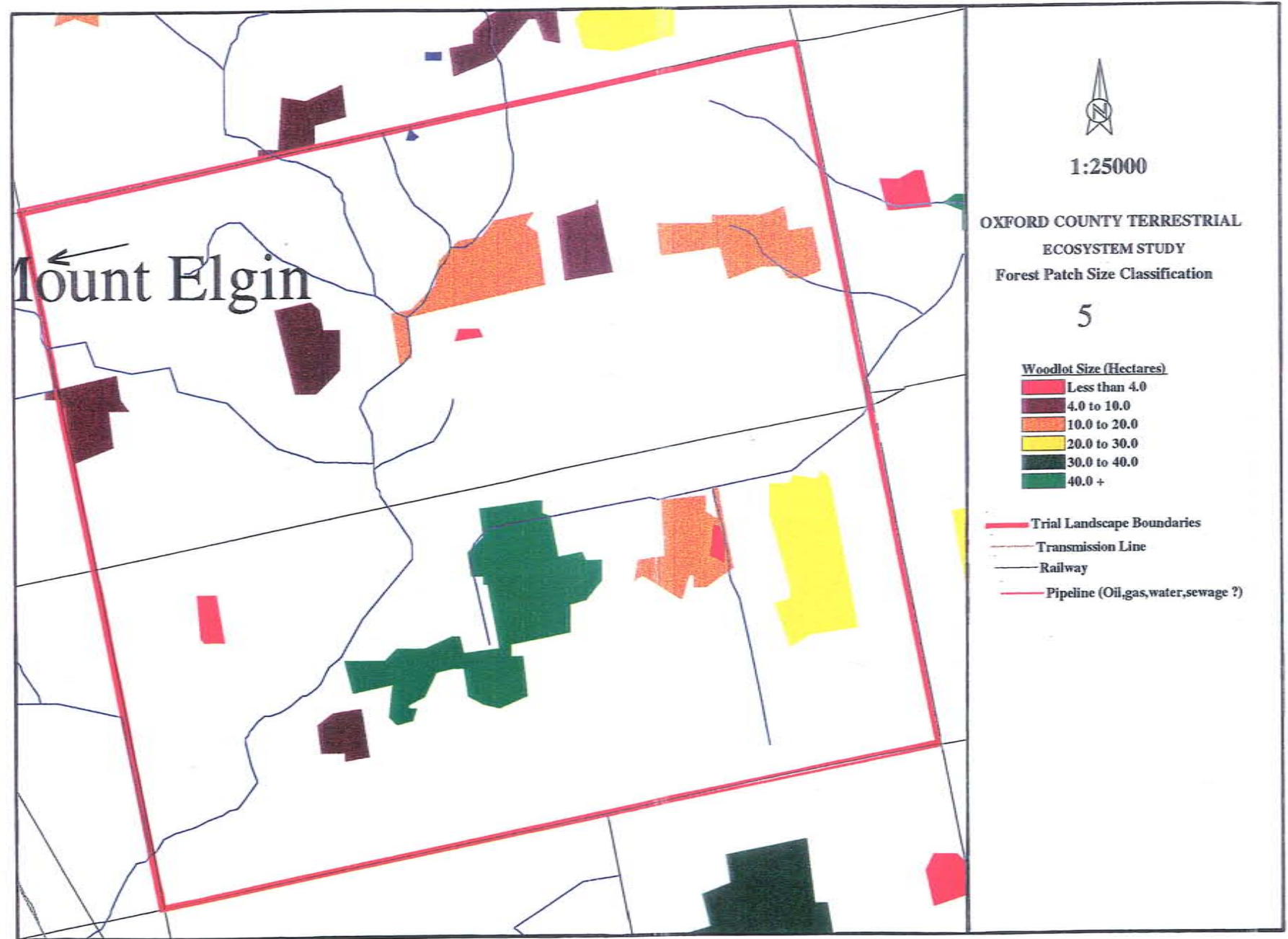
3

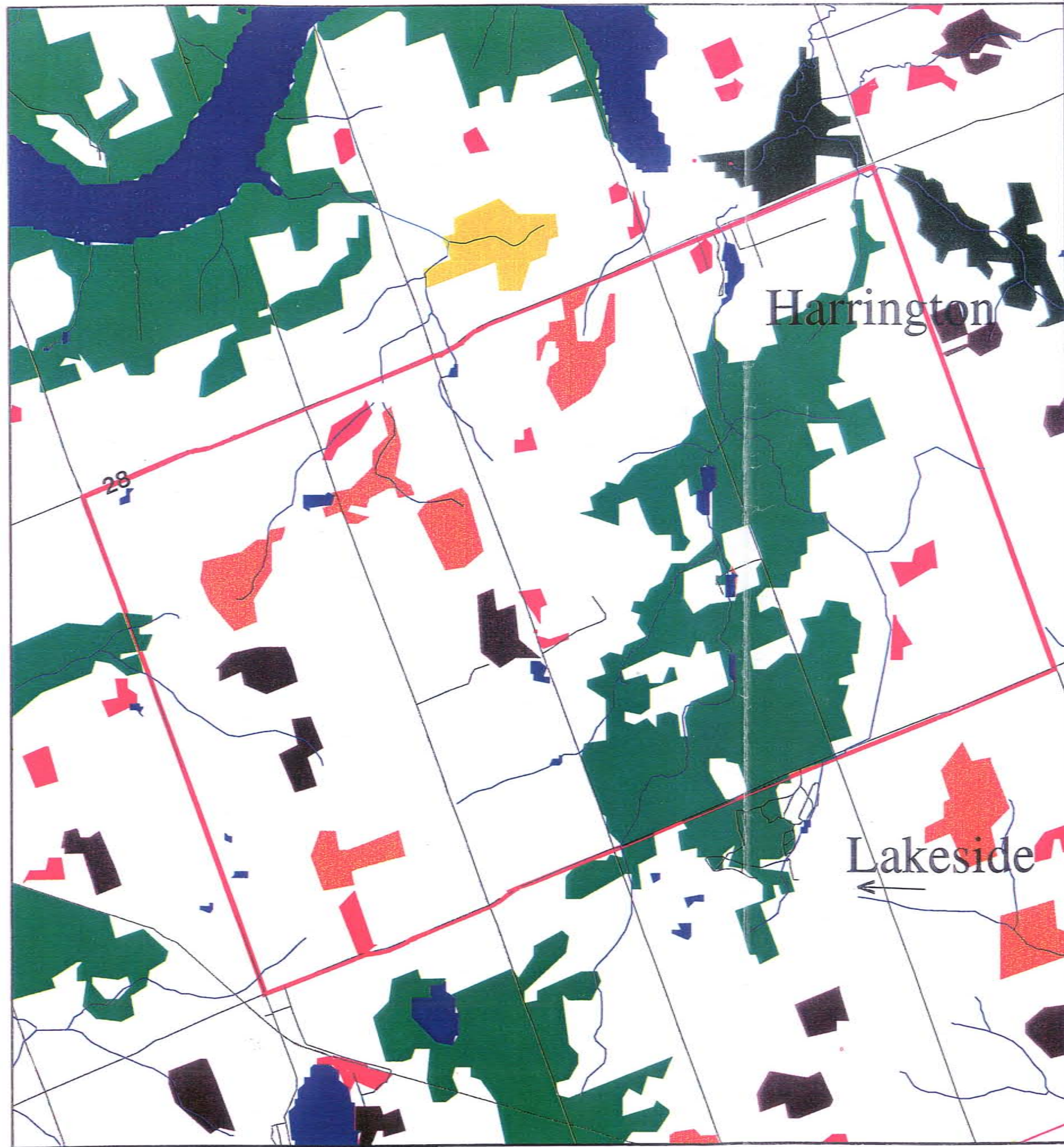
Woodlot Size (Hectares)

- Less than 4.0
- 4.0 to 10.0
- 10.0 to 20.0
- 20.0 to 30.0
- 30.0 to 40.0
- 40.0 +

- Trial Landscape Boundaries
- Transmission Line
- Railway
- Pipeline (Oil,gas,water,sewage ?)







1:25000

OXFORD COUNTY TERRESTRIAL
ECOSYSTEM STUDY
Forest Patch Size Classification

6

Woodlot Size (Hectares)

- Less than 4.0
- 4.0 to 10.0
- 10.0 to 20.0
- 20.0 to 30.0
- 30.0 to 40.0
- 40.0 +

- Trial Landscape Boundaries
- Transmission Line
- Railway
- Pipeline (Oil,gas,water,sewage ?)