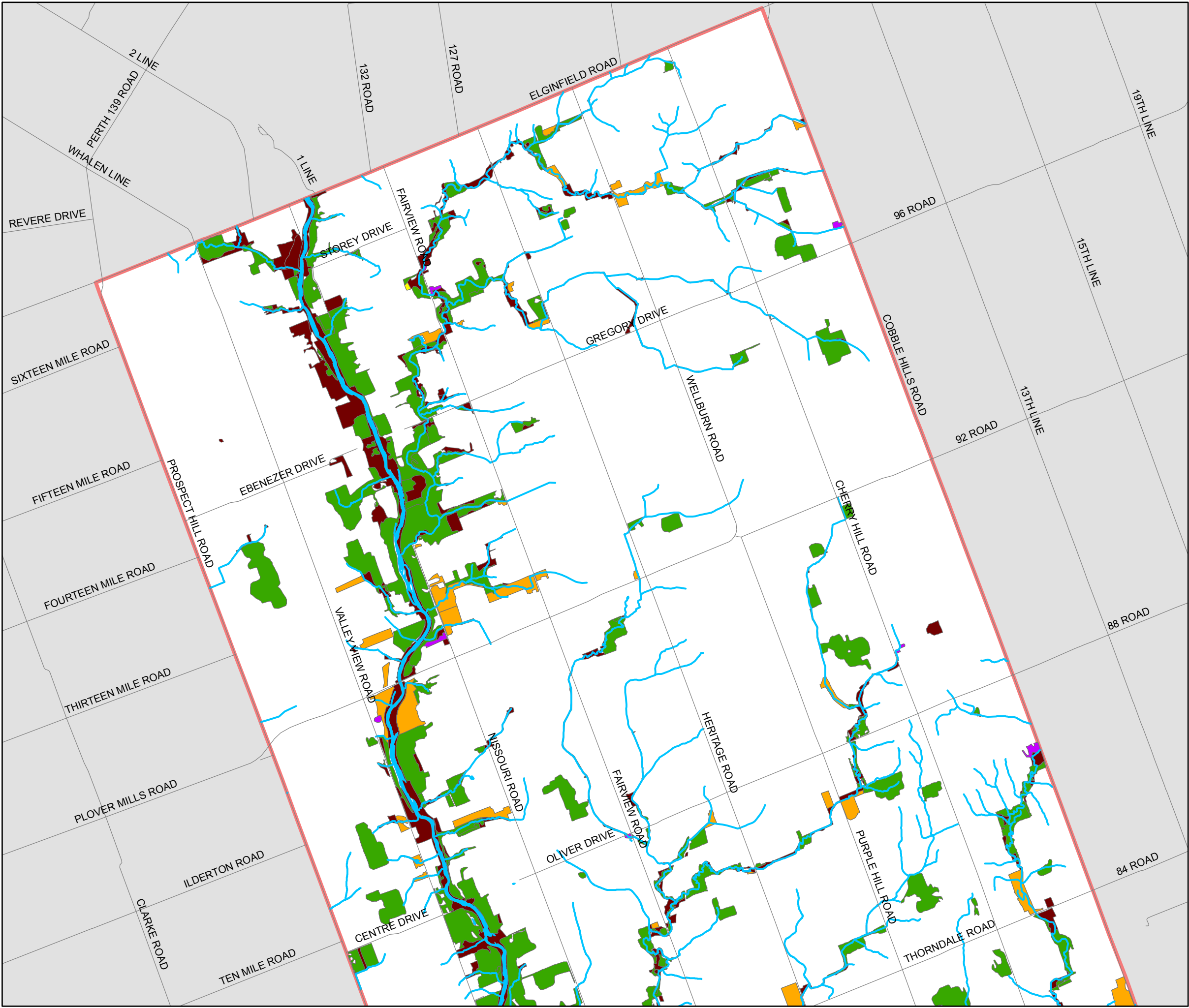


# Map 1: Thames Centre North

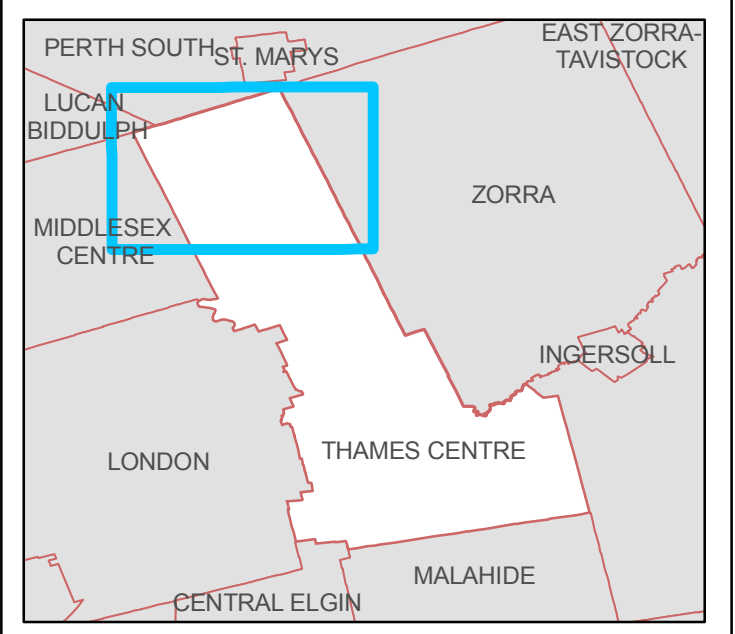
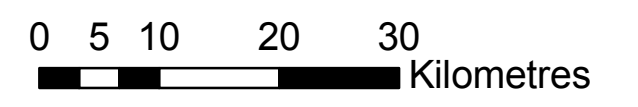
## Thames Centre Riparian Vegetation



### Riparian Vegetation Types

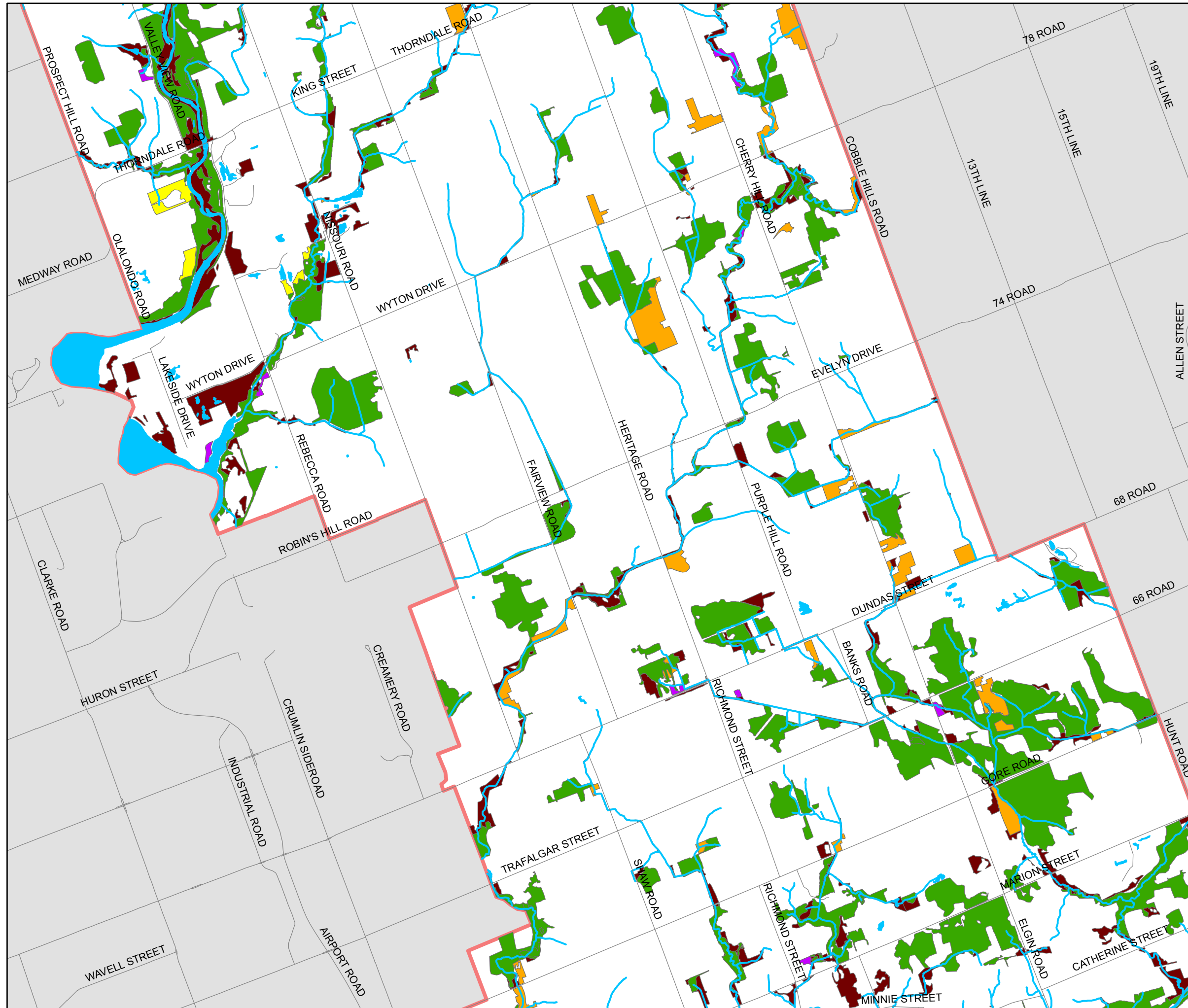
- Meadow
- Pasture
- Woodland
- Lawn
- Human Influence (e.g. vegetated gravel pits, hydro corridors)
- Thames Centre
- Waterbody
- Watercourse
- Roads

1:50,000



# Map 2: Thames Centre Central

## Thames Centre Riparian Vegetation



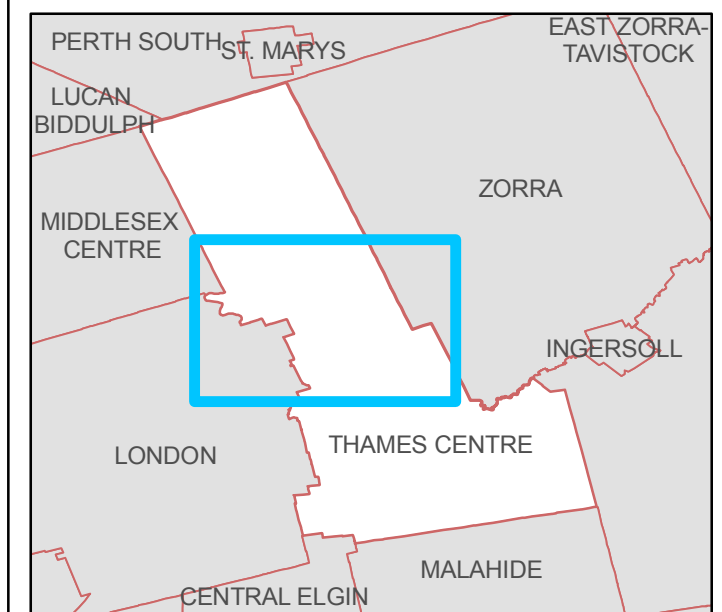
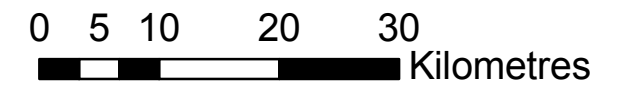
### Riparian Vegetation Types

- Meadow
- Pasture
- Woodland
- Lawn
- Human Influence (e.g. vegetated gravel pits, hydro corridors)
- Thames Centre
- Waterbody
- Watercourse
- Roads

N



1:50,000

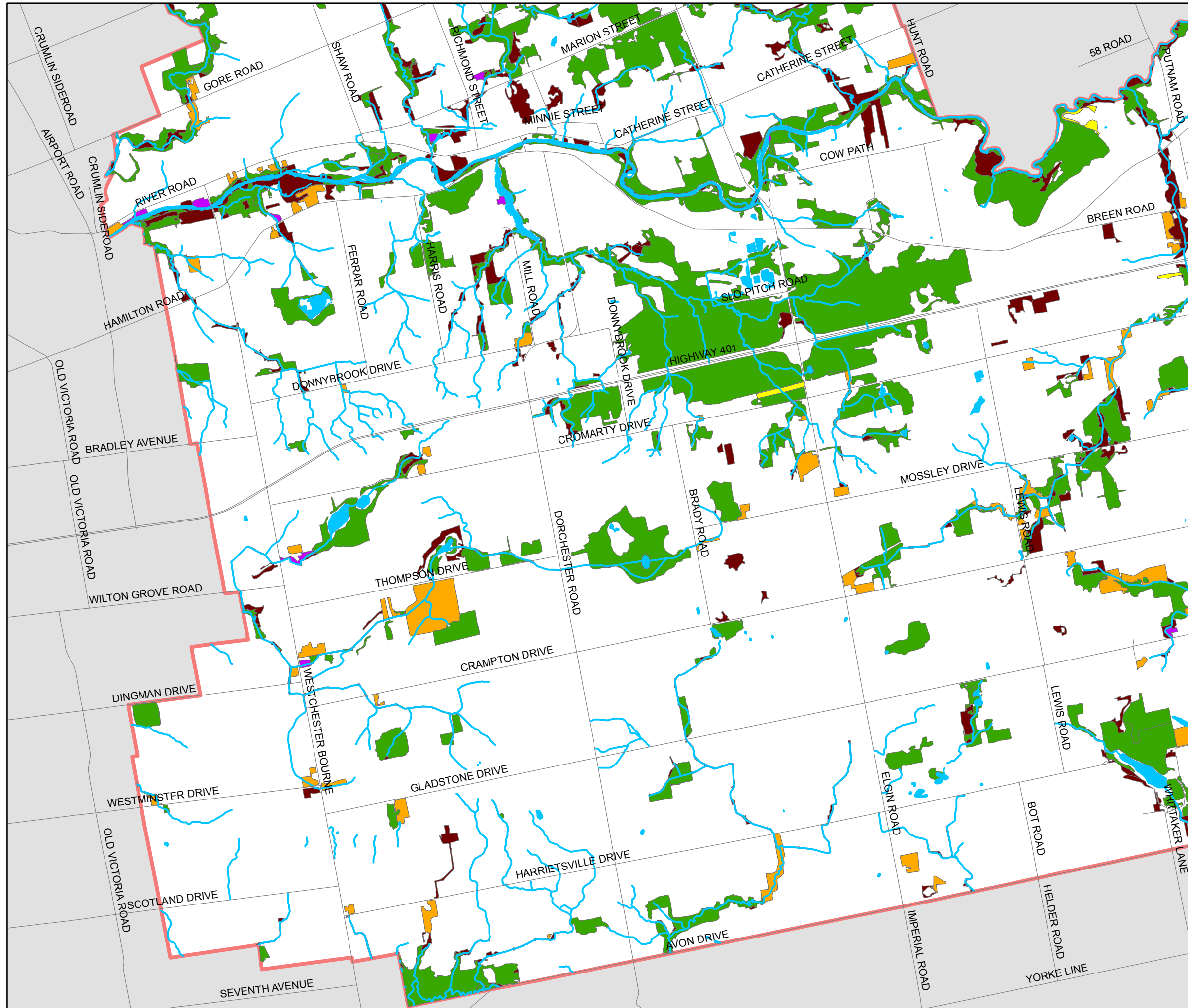


Orthographic Imagery 2006  
 Created by Tracey Haycock, October, 2008  
 for the Upper Thames River  
 Conservation Authority



# Map 3: Thames Centre Southwest

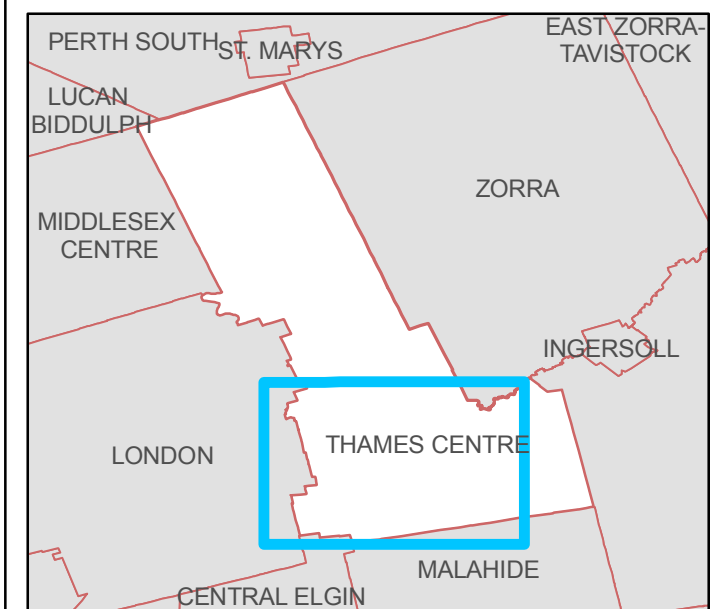
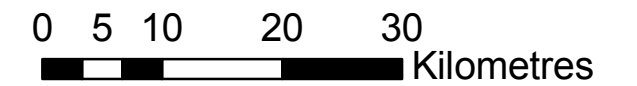
## Thames Centre Riparian Vegetation



### Riparian Vegetation Types

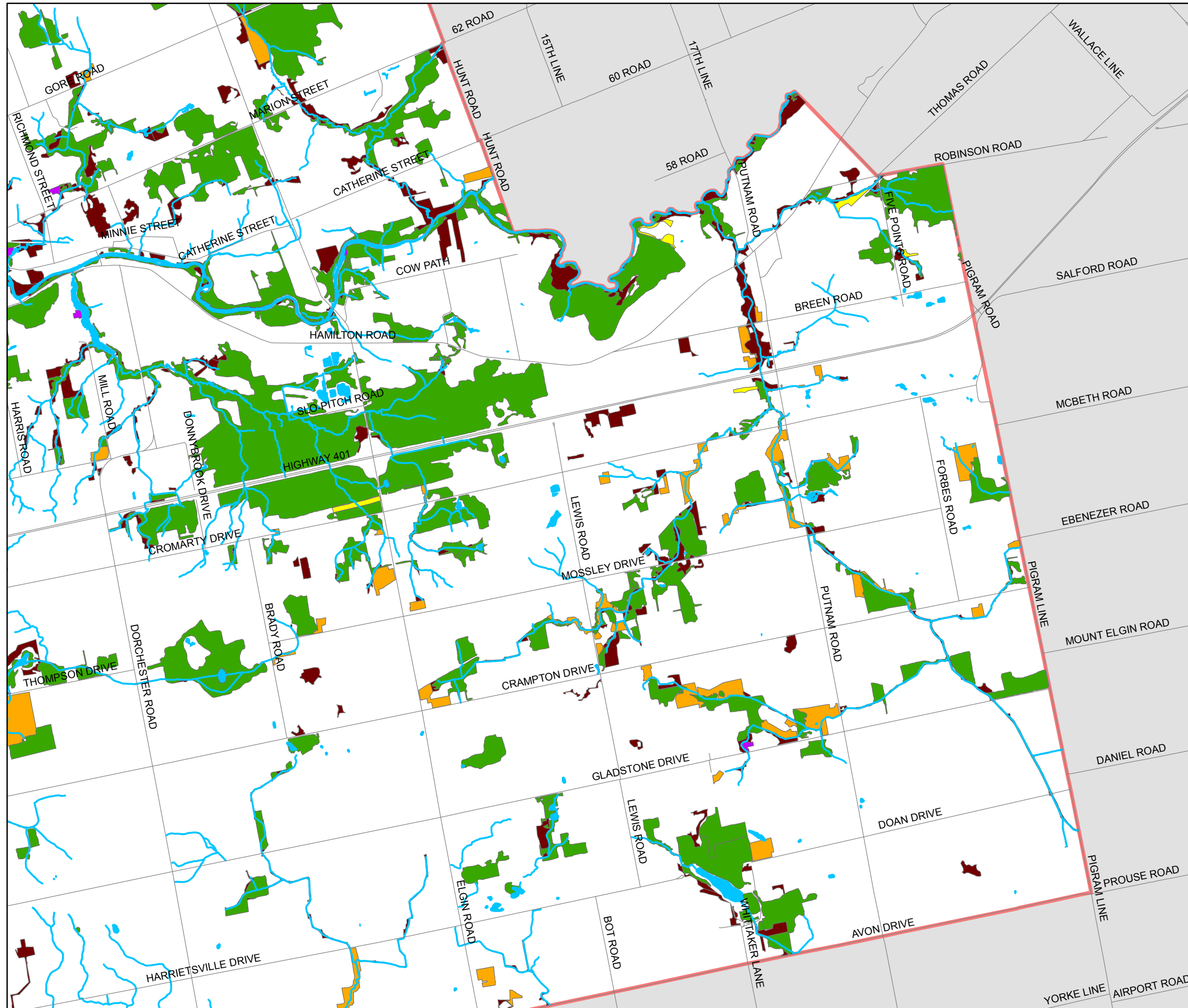
- Meadow
- Pasture
- Woodland
- Lawn
- Human Influence (e.g. vegetated gravel pits, hydro corridors)
- Thames Centre
- Waterbody
- Watercourse
- Roads

1:50,000



# Map 4: Thames Centre Southeast

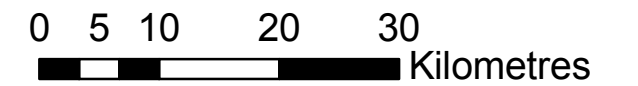
## Thames Centre Riparian Vegetation



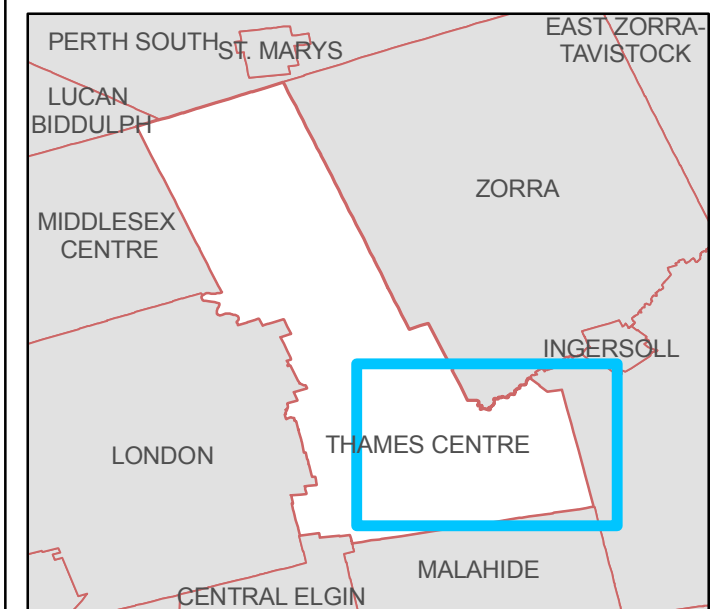
### Riparian Vegetation Types

- Meadow
- Pasture
- Woodland
- Lawn
- Human Influence (e.g. vegetated gravel pits, hydro corridors)
- Thames Centre
- Waterbody
- Watercourse
- Roads

1:50,000



N



# Map 5: Thames Centre Vegetation

Riparian Vegetation Communities vs  
Non-Riparian Vegetation Communities

- Riparian Vegetation \*
- Non-Riparian Vegetation
- Thames Centre
- Waterbodies
- Watercourse
- Roads

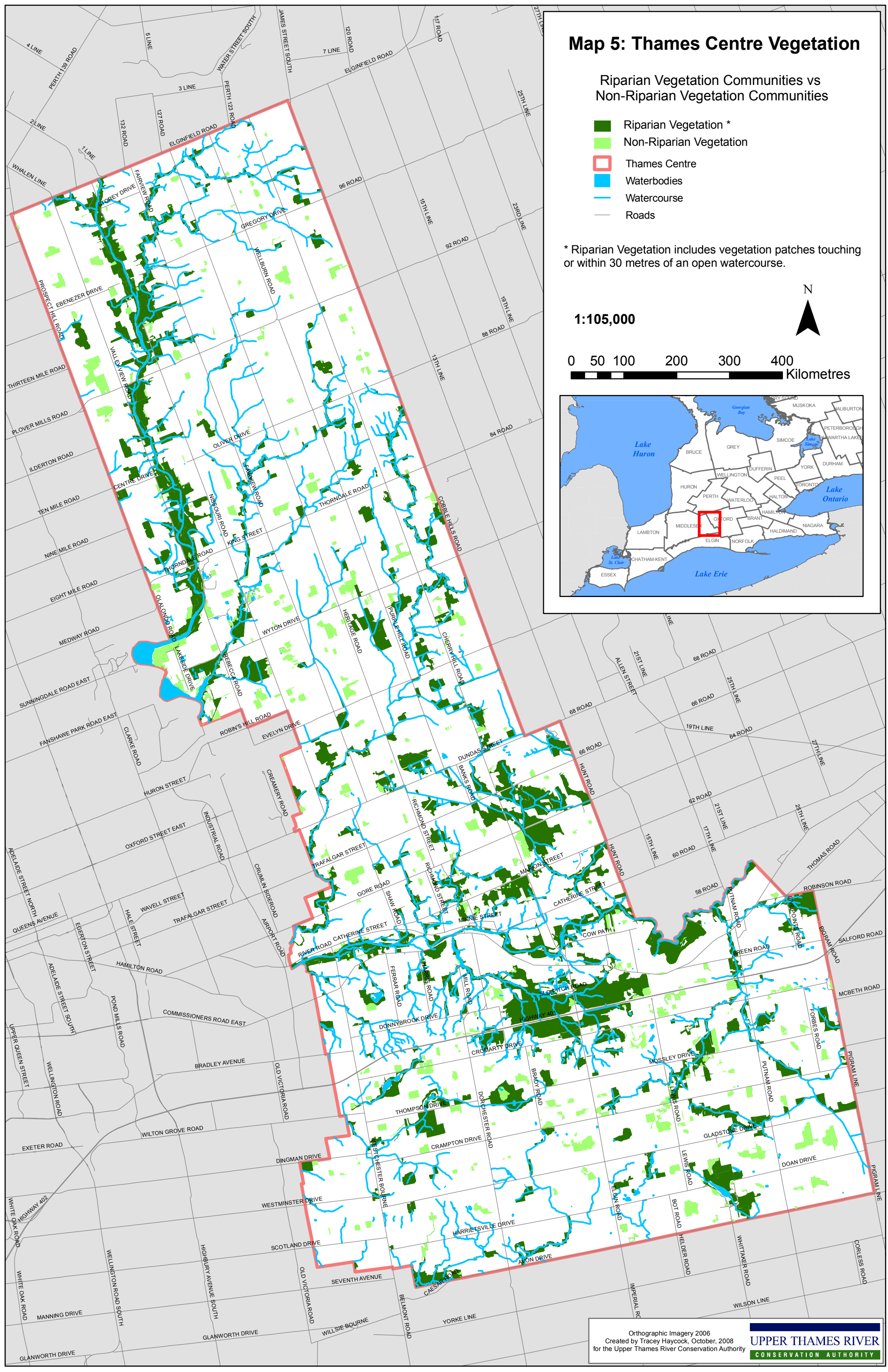
\* Riparian Vegetation includes vegetation patches touching or within 30 metres of an open watercourse.

1:105,000

N



0 50 100 200 300 400 Kilometres



# Map 6: Thames Centre Waterbodies

- Thames Centre
- Waterbodies
- Watercourse
- Roads

1:105,000



0 50 100 200 300 400 Kilometres

