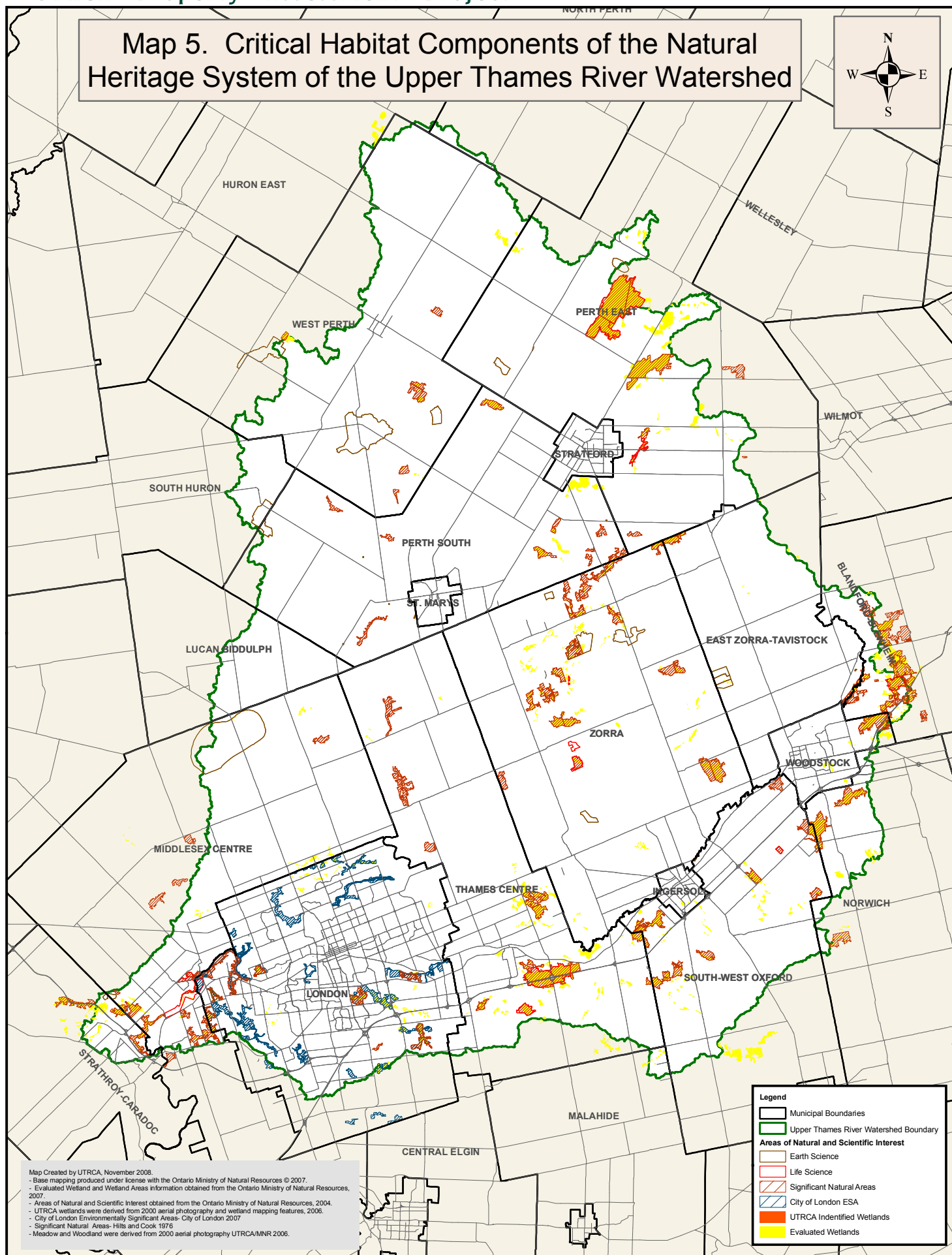
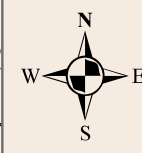


Map 5. Critical Habitat Components of the Natural Heritage System of the Upper Thames River Watershed



Map Created by UTRCA, November 2008.
 - Base mapping produced under license with the Ontario Ministry of Natural Resources © 2007.
 - Evaluated Wetland and Wetland Areas information obtained from the Ontario Ministry of Natural Resources, 2007.
 - Areas of Natural and Scientific Interest obtained from the Ontario Ministry of Natural Resources, 2004.
 - UTRCA wetlands were derived from 2000 aerial photography and wetland mapping features, 2006.
 - City of London Environmentally Significant Areas- City of London 2007
 - Significant Natural Areas- Hills and Cook 1976
 - Meadow and Woodland were derived from 2000 aerial photography UTRCA/MNR 2006.

- Legend**
- Municipal Boundaries
 - Upper Thames River Watershed Boundary
 - Areas of Natural and Scientific Interest**
 - Earth Science
 - Life Science
 - Significant Natural Areas
 - City of London ESA
 - UTRCA Identified Wetlands
 - Evaluated Wetlands