

# SIFTON BOG ESA COMMUNITY MEETING

## OCTOBER 9, 2014

### INVASIVE SPECIES





# Buckthorn

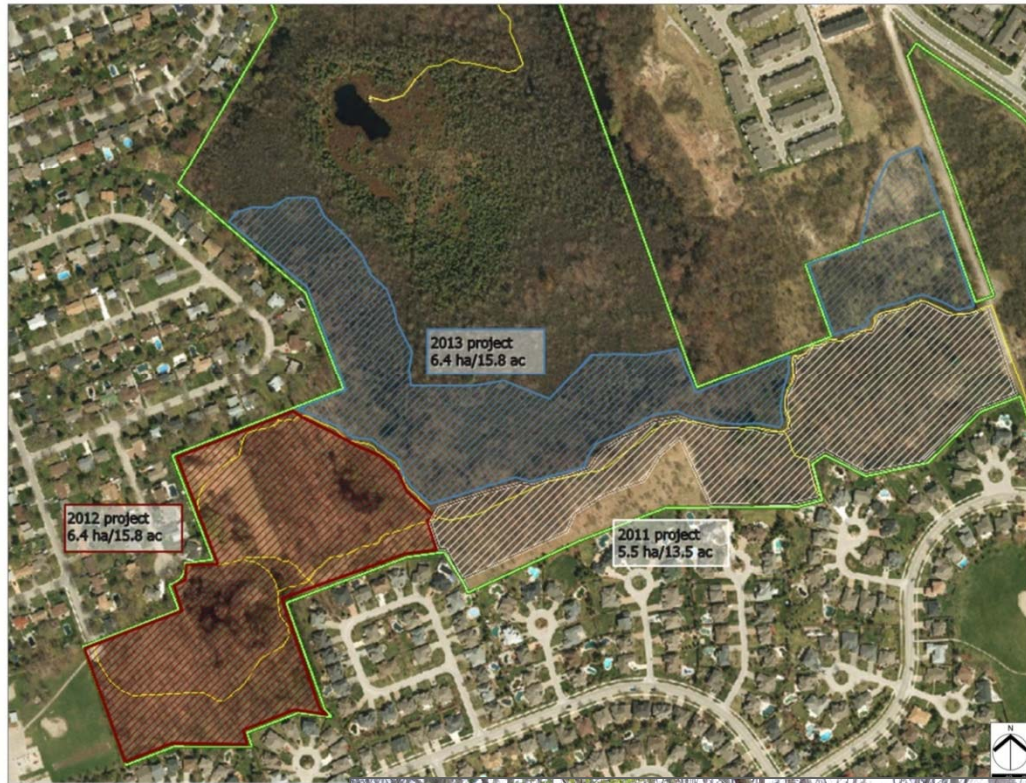
2011 – 8032 stems treated (herbicide)  
11797 stems pulled

2012 – 3463 stems treated (herbicide)  
6879 stems pulled

2013 – 5635 stems treated (herbicide)  
2882 stems pulled

Total – 17130 stems treated (herbicide)  
21558 stems pulled

**2014** - Re-visit 2013 project area and treat stems missed. If possible expand 2013 project area north to boundary and on east side of property.





# Buckthorn

- Herbicide – basal bark method most effective/efficient
- Target larger seed-bearing stems therefore removing future seed source
- Project schedule July-Oct due to plant lifecycle
  - Seed set/maturity
  - Plant preparing for winter





# Buckthorn

- Manual pulling - weed wrench and hand pulling
- Control of smaller scattered patches of seedling/saplings
- Directly adjacent to aquatic habitat
- Schedule – anytime except winter





# Tree Planting

- 2014 spring tree planting locations





# Tree Planting/Restoration

- **2012 planting**
- 40- 120 cm Sugar Maple
- 30- 80 cm Bur oak
- 20- 120 cm Red Maple
- 20- 18" White Pine
- Survival rates – 50-60%  
due to deer browse

- **2014 planting**
- 22- 175 cm Sugar Maple
- 10- 175 cm Serviceberry
- 3- 150 cm Tulip
- 10- 45 cm White Pine
- Survival rates – 90%





# Goldfish

- Began mitigation efforts in 2007
- Started with seine net – little results
- Built custom “minnow” trap – mixed results
- Once MNR permits granted – electrofishing was the preferred option
- Installed signage to educate the public





# Goldfish

## Results

- '07- 1519
- '08- 1394
- '09- 719
- '10- 1509
- '11- 292
- '12- 2296
- '13- 100
- '14- 0 (3 x – June, Aug., Sept)
- Total- 7829





# Ash Injection - EAB

- Injection with TreeAzin (Azadirachtin) every 2 years
- Injection time/tree- 20 min- 6 hrs???
- Tree vigor
- Available moisture???
- Time of day???
- Injection costs;
  - 30 cm dbh - \$86
  - 40 cm dbh - \$114
  - 50 cm dbh - \$143
- Average cost for labour is \$110 per tree. (based on 127 trees of various sizes)
- \* labour cost calculated when injecting multiple trees/visit



- 15 trees injected in 2012
- 11 trees injected in 2014





It's coming...



Thank You

Questions?