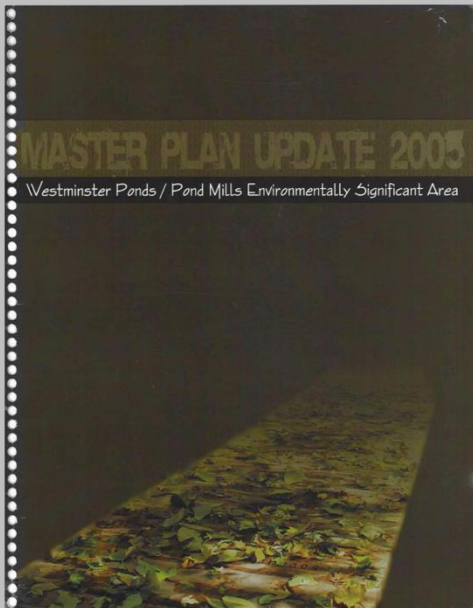


# ESA Conservation Master Plan Background



## Westminster Ponds/Pond Mills ESA: Ecological Inventory & Management Zone Report Volume 1

Prepared for the City of London

Prepared by:  
North-South Environmental Inc. with support from  
Schollen and Company Inc.  
Hutchinson Environmental Sciences Ltd.  
Norbert Woerns

April 2015

North-South Environmental Inc.  
35 Crawford Crescent, Suite 105  
P.O. Box 518  
Campbellville, Ontario  
L0P 1S0

## *Westminster Ponds/Pond Mills ESA*

## *September 29, 2016*

*Linda McDougall*

*Ecologist 519-661-2500 ext. 6494*



**London**  
CANADA

# What makes Westminster Ponds/Pond Mills an ESA?



Eastern Meadowlark (Threatened)



Eastern Wood-Pewee (Special Concern)

The ESA has natural features & ecological functions :

- Unusual landforms & rare vegetation communities
- High-quality vegetation representative of pre-settlement period
- Large size provides extensive habitat - 250 ha
- Provincially Significant Wetlands contribute to ecosystem health beyond ESA boundaries
- High level of biodiversity
- Important wildlife habitat & linkage function
- Significant habitat for rare, threatened, endangered species

# Official Plan & London Plan Policies for ESAs



- ESAs contain natural features and perform ecological functions that warrant their retention in a natural state (15.4.1 / 266)
- Environmentally Significant Areas - to protect the existing ecosystem features and functions, to increase the amount of interior forest habitat, and to strengthen corridors. (15.3.7 ii (a) / 341 2a))

# How do we protect ESAs and permit use?

## CONSERVATION MASTER PLAN PROCESS

### Phase 1

**Community Engagement and Participation**  
**Life Science Inventory and Evaluation**  
**Boundary Delineation**  
**Application of Management Zones and Review of Existing Trails**  
**Identification of Management Issues**

### Phase 2

**Community Engagement and Participation**  
**Goals, Objectives and Recommendations**  
**Ecological Protection, Enhancement and Restoration**  
**Trail Planning and Design Process**  
**Priorities for Implementation**  
**Final Conservation Master Plan**



# Trail Standards Adopted by Council June 24, 2016



THE CORPORATION OF THE CITY OF LONDON  
**Guidelines for Management Zones &  
Trails in Environmentally Significant  
Areas**

May 2016

Now Available  
for Free  
Download on  
City's  
Website

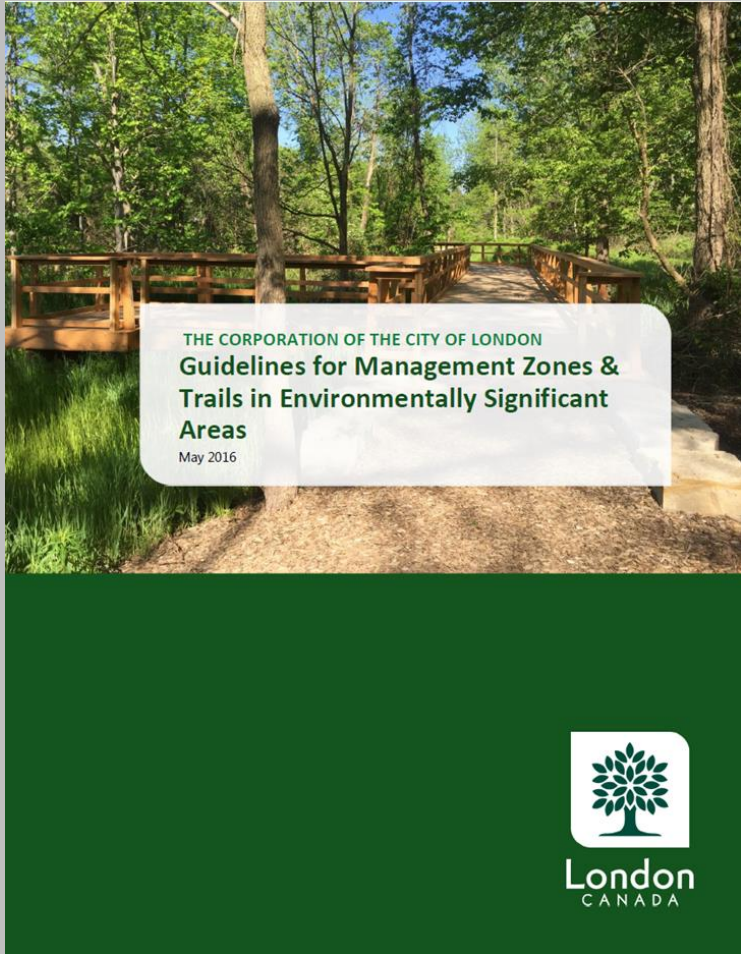


London  
CANADA



London  
CANADA

# Trails Advisory Group ( TAG)



TAG to address trail projects in ESAs that were not originally contemplated or addressed in the current ESA Master Plans. TAG is comprised of representatives from:

- Thames Valley Trail Association
- EEPAC
- Nature London
- UTRCA
- Accessibility Advisory Committee
- Neighbourhood community association based on which ESA the TAG is reviewing
- Directly associated “Friends of” ESA group will be included based on which ESA the TAG is reviewing
- City staff who will facilitate meetings and site visits

# Progress on 2005 Master Plan Recommendations

- **86 Recommendations** were developed in 2005 to guide decision-making
- Study completed by North South Environmental for City directly addresses over 20 of the 2005 Recommendations
- **98%** of the 2005 CMP Recommendations have now been addressed or started
- **Recommendation #68 and 69** refer to an **accessible link to Dearness home from Tourism Building**



## Westminster Ponds/Pond Mills ESA: Ecological Inventory & Management Zone Report Volume 1

Prepared for the City of London

Prepared by:  
North-South Environmental Inc. with support from  
Schollen and Company Inc.  
Hutchinson Environmental Sciences Ltd.  
Norbert Woerns

April 2015

North-South Environmental Inc.  
 35 Crawford Crescent, Suite U5  
P.O. Box 518  
Campbellville, Ontario  
L0P 1B0



# New Trail over Former Landfill near Commissioners





# New Trail over Former Landfill near Commissioners



London  
CANADA



# Invasive Species Management & Restoration 2015 / 2016



Westminster Ponds - Worthington Ave	<b>Purple Loosestrife Beetle</b>
Westminster Ponds - West of Spettigues Pond	<b>Buckthorn</b>
Westminster Ponds - South Pond	<b>Aquatic Invasives</b>
Westminster Ponds - Glen Cairn Open Space	<b>Japanese Knotweed, Black Locust and Buckthorn</b>
Westminster Ponds - Pond Mills Rd	<b>Buckthorn / Autumn Olive</b>
Westminster Ponds - North of Saunders Pond	<b>Native Tree Planting</b>
Westminster Ponds - Fish/Game Club	<b>Scots Pine Cut/Pull</b>
Westminster Ponds - South Pond	<b>Black Locust</b>
Westminster Ponds - South Pond	<b>Phragmites /cut / drowning</b>

# Invasive Species Management



ESA Team Photos – Managing Phragmites by cutting & drowning it in South Pond in WMP ESA

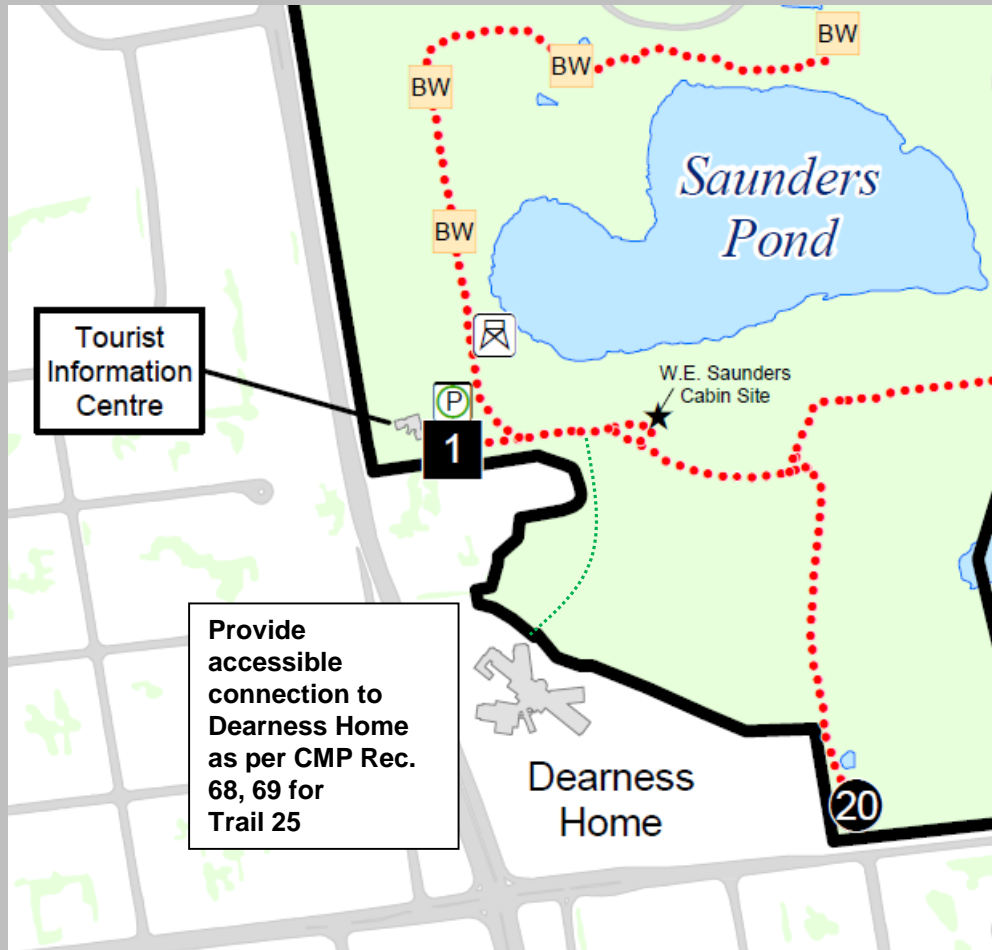


# City of London - Ontario Nature Award Recipient

- The City of London was recognized by **Ontario Nature** with the **2015 Lee Symmes Municipal Award** for its commitment to protecting **Environmentally Significant Areas**. Ontario Nature commended the City for ensuring a natural legacy for future generations.



# Westminster Ponds / Pond Mills ESA



- Accessible trail to Saunders Cabin & Dearness (CMP Rec. 68 & 69)
- Restoration, boardwalk and trail improvement project for 2016/2017
- \$100 K contribution to project from "Canada 150" Community Grant

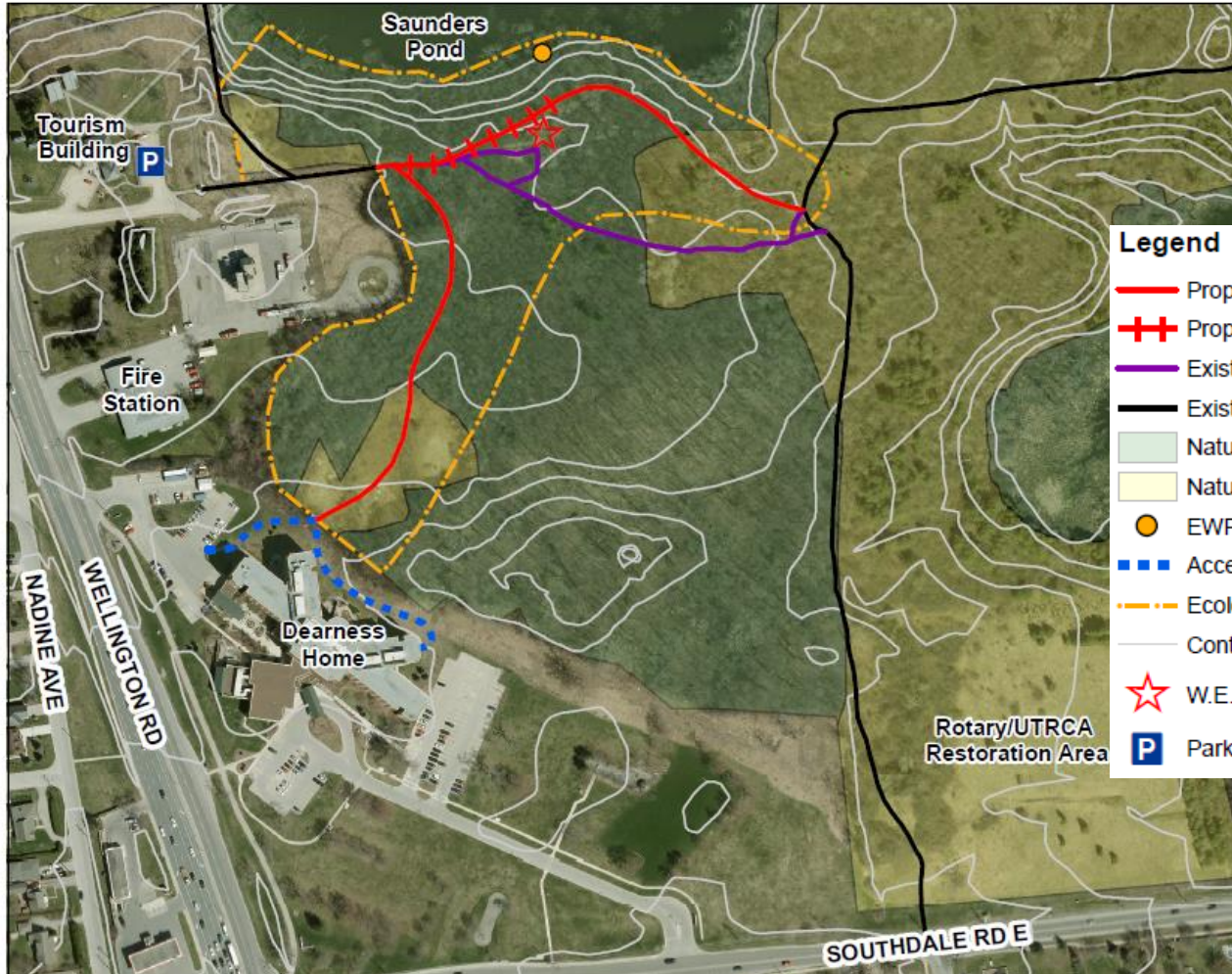


# Accessible Trail to Dearness Home & Restoration Areas

## Trails Advisory Group (TAG) Option C Preferred Alignment

Westminster Ponds/Pond Mills ESA - Tourism Building to Saunders Cabin to Dearness Home

Accessible Trail & boardwalk implementation completion est. Fall 2017





# Upcoming Event - Doors Open

## Westminster Ponds



Saturday, October 1, 2016 - 10:30am to 2:30pm

Sunday, October 2, 2016 - 10:30am to 2:30pm

944 Western Counties Road  
London, ON Canada

Variety of hikes and activities hosted by UTRCA, Thames Valley Trail Association, Nature London, Reforest London & Thames Talbot Land Trust

<http://www.londonculture.ca/>